

The background is a complex, abstract artwork dominated by various shades of blue, from deep navy to light, airy tones. The composition is filled with organic, flowing, and somewhat chaotic forms that suggest movement and depth. In the upper left, there's a lighter, more defined shape that could be interpreted as a stylized face or a head in profile. The overall texture is painterly, with visible brushstrokes and a sense of layered, translucent forms. The lighting is soft and diffused, creating a dreamlike and ethereal atmosphere.

ROH

PORTFOLIO

KEI IMAZU

ROH

BIOGRAPHY

Born 1980, Yamaguchi, Japan

Lives and works in Bandung, Indonesia

Kei Imazu's painting practice takes root in the peculiar conditions of the contemporary Internet age, where the visual torrent of information becomes a repository to distort and reassemble. These resulting 3D-renderings and digital sketches, by-products of a saturated image world, serve as sketches for her oil paintings. This approach is shaped by the artist's archaeological impulse and her interest in the recovery and reconstruction of human lifeworlds from material cultures; since moving to Indonesia in 2018, Imazu's works have come to address the country's colonial histories as well as the multiple stories and folklores shared across the archipelago, which often contain parallel themes to global mythological narratives. Recently, Imazu's practice has expanded to include painted sculptures and installations as sites of recovery and reconstruction, where traces of historical and mythical narratives are bound into new layers of understanding and kinship.

Imazu has held several solo exhibitions including *The Sea is Barely Wrinkled* at Museum MACAN, Jakarta, Indonesia (2025); *Tanah Air* at Tokyo Opera City Art Gallery, Tokyo, Japan (2025); Art Basel Paris: *Stratum Vein* with ROH at Grand Palais, Paris, France (2024); *unearth* at ROH, Jakarta, Indonesia (2023); *Sowed Them to the Earth* at Jessica Silverman Gallery, San Francisco, USA (2023); *Mapping the Land/Body/Stories of its Past* at ANOMALY, Tokyo, Japan (2021); *Anda disini / You are here* at Museum Haus Kasuya, Kanagawa, Japan (2019); *Measuring Invisible Distance* at Yamamoto Gendai, Tokyo, Japan (2018); and *Overgrown* at ROH Projects, Jakarta, Indonesia (2018). Her group exhibitions include Bangkok Art Biennale: *Nurture Gaia* at Bangkok Art and Culture Centre, Bangkok, Thailand (2024); Frieze Seoul, COEX Convention & Exhibition Center, Seoul, South Korea (2022); *WAGIWAGI* at documenta fifteen, Hübner areal, Kassel, Germany (2022); *Declaring Distance: Bandung — Leiden* at Selasar Sunaryo Art Space, Bandung, Indonesia (2022); AAAHHH!!! Paris Internationale in Paris, France (2018), all featuring her collaborative work with Bagus Pandega; The 7th Changwon Sculpture Biennale: *silent apple* in Changwon, South Korea (2024); *Let's See* at ArtSpace @ HeluTrans, Singapore (2024); *1* at ROH, Jakarta, Indonesia (2022); *We Paint!* at Palais de Beaux-Arts, Paris, France (2022); *Last Words* at ROH, Jakarta, Indonesia (2021); *We Are Here* at Jessica Silverman Gallery, San Francisco, USA (2021); *Tiger Orchid* at Art Basel OVR: Miami Beach, ROH Projects (2020); *Roppongi Crossing: Connexion* at Mori Art Museum, Tokyo, Japan (2019); *Meet the Collection - 30th Anniversary of the Yokohama Museum of Art* at Yokohama Museum of Art, Kanagawa, Japan (2019); and *Taming Y/Our Passion* at Aichi Triennale, Nagoya, Japan (2019); Kei Imazu is the finalist of Prix Jean-François Prat in 2020. Imazu's works are part of the public collections of various institutions in Japan, among them are MUSEUM HAUS KASUYA in Kanagawa as well as Takahashi Ryutaro Collection, Taguchi Art Collection, and OKETA COLLECTION in Tokyo. Her works are also part of the public collections of San Jose Museum of Art, California, U.S.A. and X Museum, Beijing, China. Kei Imazu will present her first mid-career survey in the forthcoming solo exhibition *Tanah Air* at Tokyo Opera City Art Gallery, Tokyo, Japan (2025).

ROH

CURRICULUM VITAE

EDUCATION

- 2015 MA Fine Art, Tama Art University, Department of Painting, Tokyo, Japan
- 2007 BA Fine Art, Tama Art University, Department of Painting, Tokyo, Japan

SELECTED SOLO EXHIBITIONS

- 2025 *The Sea is Barely Wrinkled*. Museum MACAN, Jakarta, Indonesia
Tanah Air. Tokyo Opera City Art Gallery, Tokyo, Japan
- 2024 Art Basel Paris 2024: *Stratum Vein*. ROH, Grand Palais, Paris, France
- 2023 *unearth*. ROH, Jakarta, Indonesia
Sowed Them to the Earth. Jessica Silverman Gallery, San Francisco, USA
- 2021 *Mapping the Land/Body/Stories of its Past*. ANOMALY, Tokyo, Japan
- 2019 *Anda disini / You are here*. Museum Haus Kasuya, Kanagawa, Japan
- 2018 *Measuring Invisible Distances*. YAMAMOTO GENDAI, Tokyo, Japan
- 2017 *Overgrown*. ROH Projects, Jakarta, Indonesia
- 2016 *Repatriation*. YAMAMOTO GENDAI, Tokyo, Japan
- 2015 *Broken Image*. YAMAMOTO GENDAI, Tokyo Japan
- 2013 *Puzzle*. YAMAMOTO GENDAI, Tokyo Japan
- 2010 *Flash*. YAMAMOTO GENDAI, Tokyo Japan
- 2008 Kei Imazu Solo Exhibition. NICHE Gallery, Nagoya, Japan
- 2006 Kei Imazu Solo Exhibition. Gallery b., Tokyo, Japan

SELECTED GROUP EXHIBITIONS

- 2025 *Thresholds*. White Cube Hong Kong, Hong Kong
Singapore Biennale: *pure intention*. Former Raffles Girls' School, Hall, Singapore
Bukhara Biennial: *Recipes for Broken Hearts*. Bukhara, Uzbekistan
Art Jakarta 2025. ROH, Jakarta International Expo, Jakarta, Indonesia
- 2024 Layers of Accumulated Time: Depicting the world we live in: 21st Century Museum of Contemporary Art, Kanazawa, JAPAN

ROH

	Art Basel Hong Kong 2025: Galleries, ROH, Hong Kong
	Bangkok Art Biennale: <i>Nurture Gaia</i> . Bangkok Art and Culture Centre, Bangkok, Thailand
	The 7th Changwon Sculpture Biennale: <i>silent apple</i> . Changwon, South Korea
	<i>Let's See</i> . Curated by ROH and MISAKO & ROSEN, ArtSpace @ HeluTrans, Singapore
	<i>Titicara: Meruah</i> . Selasar Sunaryo Art Space, Bandung, Indonesia
2023	Art Basel Hong Kong 2024: Galleries, ROH, Hong Kong
	Frieze Seoul 2023. ROH, COEX, Seoul, South Korea
	<i>Alternative Sea for Asia</i> . Jeonnam Museum of Art, Jeollanam-do, South Korea
	<i>Kiwari</i> . Tumurun Museum, Surakarta, Indonesia
2022	Art Basel Hong Kong 2023: Galleries, ROH, Hong Kong
	ASIA NOW, <i>WAGIWAGI</i> by SUAVEART, Monnaie de Paris, Paris, France
	Art Collaboration Kyoto. Gallery Collaborations, Kyoto International Conference Center, Japan
	Art Basel Miami Beach 2022. Miami Beach Convention Center, Florida, USA
	Frieze Seoul 2022. ROH, COEX Mall, Seoul, South Korea
	<i>WAGIWAGI</i> , documenta fifteen. Hübner areal, Kassel, Germany
	<i>Declaring Distance Bandung - Leiden</i> . Selasar Sunaryo Art Space, Bandung, Indonesia
	1. ROH, Jakarta, Indonesia
	<i>We Paint!</i> . Palais de Beaux-Arts, Paris, France
2021	<i>Last Words</i> . ROH, Jakarta, Indonesia
	<i>We Are Here</i> . Jessica Silverman Gallery, San Francisco, USA
2020	<i>Tiger Orchid</i> . Art Basel OVR: Miami Beach, ROH, Online
	Prix Jean-François Prat. Paris, France
	<i>RELAY TO TOKYO - Inheriting and Gathering</i> , The Byzantine and Christian Museum, Athens, Greece
	— <i>INSIDE THE COLLECTOR'S VAULT, VOL.1</i> —, WHAT Museum, Tokyo, Japan
2019	<i>Aichi Triennale 2019: Taming Y/Our Passion</i> , Nagoya City Museum, Aichi, Japan
	<i>Meet the Collection - 30th Anniversary of the Yokohama Museum of Art</i> . Yokohama Museum of Art, Kanagawa, Japan
	<i>Roppongi Crossing: Connexions</i> . Mori Art Museum, Tokyo, Japan
2018	Contemporary Art of The 21st Century - Exhibition of Taguchi Art Collection, Hiratsuka Museum of Art, Kanagawa, Japan
2017	In Focus: Japanese Contemporary Art, Minneapolis Institute of Art, Minnesota, USA
	<i>Spring Fever</i> . Komagome SOKO, Tokyo Japan
	<i>#10, Object Manipulation, Statements</i> , Tokyo, Japan
	<i>Perspectives</i> . Intermediateque (IMT), Tokyo, Japan
	Sylvanian Families Biennale. XYZ Collective, Tokyo, Japan
2016	<i>Mindfulness! Takahashi Collection 2016</i> , The Museum of Art, Kochi; Kochi, Japan

ROH

- 2015 *Welcome to the A W E S O M E M A N S I O N*. YAMAMOTO GENDAI, Tokyo, Japan
Intimate Curiosity —Invitation to Japanese Collectors of Contemporary Art. Hong Kong Arts Centre, Hong Kong
execution. YAMAMOTO GENDAI, Tokyo, Japan
Prudential Eye Zone. ArtScience Museum, Singapore
Taguchi Hiroshi Art Collection: A Walk around the Contemporary Art World after Paradigm Shift. The Museum of Fine Arts, Gifu, Japan
- 2014 *Kichijoji no Nichiyoubi (KADAI) by Hiroyuki Oki*, Art Center Ongoing, Tokyo, Japan
Taguchi Art Collection: TAG-TEN. Matsumono City Museum of Art, Nagano, Japan
- 2013 *flowers80.1*. TRAUMARIS, Tokyo, Japan
- 2012 *Blind Sight*. MA2 Gallery, Tokyo, Japan
Painting Never Dies. YUKA TSURUNO Gallery, Tokyo, Japan
- 2011 *Girlfriends Forever!*. Tokyo Wonder Site Hongo, Tokyo, Japan
Culture. Art Center Ongoing, Tokyo, Japan
- 2010 *JAPANESE COLORS*. Gallery IHN, Seoul, South Korea
- 2009 *VOCA 2009*. The Ueno Royal Museum, Tokyo, Japan
Women Without Boundaries. Art Labor Gallery, Shanghai, China
- 2007 *Niche Young Artist Show*. NICHE Gallery, Tokyo, Japan
- 2006 *The Third Reunited Exhibition*. Yokohama Citizen Gallery, Azamino, Japan
Hyakka-Ryouran (Blossoms in gay profusion). BOICE PLANNING, Kanagawa, Japan
- 2005 *Yanaka-Biyori (Good day in Yanaka City)*, Gallery J2, Tokyo, Japan

AWARDS

- 2020 Finalist, Prix Jean-Francois Prat 2020
- 2013 Encouragement Award, The 5th Kinutani Koji Award, The Mainichi Newspapers
- 2009 Prize for Excellence, VOCA 2009, The Ueno Royal Museum
- 2006 Accepted at Shell Art Award Exhibition
- 2004 Accepted at Tokyo Wonderwall Exhibition

ROH

THRESHOLDS

GALUH ANINDITA
ARAHMAIANI
CHRISTINE AY TJOE
NADIAH BAMADHAJ
KEI IMAZU
INES KATAMSO
I GUSTI AYU KADEK MURNIASIH
CITRA SASMITA
JENNIFER TEE

31 OCTOBER 2025 – 10 JANUARY 2026

WHITE CUBE HONG KONG,
HONG KONG

IMAGE COURTESY OF THE ARTIST AND WHITE CUBE
PHOTOGRAPHY BY KITMIN LEE



ROH

KEI IMAZU

Jantung Pisang
2025
Oil on canvas
250 × 205 cm





Saltflower
2025
Oil on canvas
205 × 205 cm

ROH

KEI IMAZU

Hibiscus
2024
Acrylonitrile butadiene styrene,
polyurethane paint and iron
85 × 92 × 57 cm



ROH

KEI IMAZU



ROH

SINGAPORE BIENNALE 2025:
PURE INTENTION

KEI IMAZU
IKKIBAWIKRRR

31 OCTOBER 2025 – 29 MARCH 2026

FORMER RAFFLES GIRLS' SCHOOL, HALL,
SINGAPORE

PHOTOS COURTESY OF ROH



Harvesting from the Buried Goddess Body
2023
Oil on linen
250 × 202 cm

Memories of the Land | Body
2020
Oil on linen
300 × 600 cm

Pelvis and Rhizome
2023
Oil on linen
194 × 162 × 4 cm

ROH

BUKHARA BIENNIAL:
RECIPES FOR BROKEN HEARTS

5 SEPTEMBER - 20 NOVEMBER 2025

BUKHARA, UZBEKISTAN

PHOTOS COURTESY OF ROH



ROH

KEI IMAZU WITH PAVEL MAKAROV AND
RUSTAM MUZAFFAROV

Arch of Arrival

2025

Iron plate, acrylic paint, fabric

Variable dimension

Commissioned by the Uzbekistan Art and Culture
Development Foundation for the Bukhara Biennial
2025.





ROH

KEI IMAZU WITH PAVEL MAKAROV AND
RUSTAM MUZAFFAROV

Gate
2025
Iron plate, acrylic paint, fabric
Variable dimension

Commissioned by the Uzbekistan Art and Culture
Development Foundation for the Bukhara Biennial
2025



ROH

ALIEN SHORES: LANDSCAPE, ONCE REMOVED

BAGUS PANDEGA AND KEI IMAZU
ETEL ADNAN
ALIA AHMAD
DARREN ALMOND
HAROLD ANCART
MICHAEL ARMITAGE
MILTON AVERY
SHOLTO BLISSETT
GLENN BROWN
LYNNE DREXLER
PRANAY DUTTA
FERNANDA GALVÃO
NOÉMIE GOUDAL
DAVID HOCKNEY
SKY HOPINKA
SHARA HUGHES
MARGUERITE HUMEAU
HUNG FAI
EVA JOSPIN
ANSELM KIEFER
RICHARD MAYHEW
KEN GUN MIN
JOAN NELSON
ISAMU NOGUCHI
MINORU NOMATA
GEORGIA O'KEEFFE
EMILIO PEREZ
MARINA RHEINGANTZ
CINGA SAMSON
TOMÁS SÁNCHEZ
EMMA WEBSTER
TAKAKO YAMAGUCHI
ALYINA ZAIDI
ROBERT ZEHNDER

9 JULY – 7 SEPTEMBER 2025

WHITE CUBE BERMONDSEY
144–152 BERMONDSEY STREET
LONDON, UNITED KINGDOM

IMAGE COURTESY OF THE ARTISTS AND WHITE CUBE
PHOTOGRAPHY BY OLLIE HAMMICK



Artificial Green by Nature Green 4.1

2025

Painting and erasing machine installation, water
paint on linen canvas, modular synthesizer, LED
screen, PC, and palm oil tree

Dimensions variable

ROH

ART JAKARTA 2025:
WARNA IBU

ADITYA NOVALI
AGUNG KURNIAWAN
ALBERTHO WANMA
BAGUS PANDEGA
BANNY JAYANATA
BEA CAMACHO
BUDI SANTOSO
DAVY LINGGAR
DUSADEE HUNTRAKUL
EKO NUGROHO
FAISAL HABIBI
HOU YIJIE
IMMARTYAS
KAI YODA
KEI IMAZU
MARIA TANIGUCHI
MARUTO ARDI
MELLA JAARSMA
NADYA JIWA
NICOLE COSON
RAB
RAHMAD POETRA
SAWANGWONGSE YAWNGHWE
SOOBEEN LEE
STELLA ZHONG
SYAIFUL AULIA GARIBALDI
TITH KANITHA
TROMARAMA
VIRGINIE ITTAH

3 – 5 OCTOBER 2025

JAKARTA INTERNATIONAL EXPO
KEMAYORAN
JAKARTA, INDONESIA

PHOTOS COURTESY OF ROH

ROH

KEI IMAZU

Untitled
2025
Oil and pastel on canvas
60 × 20.2 × 1.8 cm



ROH

THE SEA IS BARELY WRINKLED

24 MAY - 5 OCTOBER 2025

MUSEUM MACAN
AKR TOWER LEVEL M
JALAN PANJANG NO. 5, KEBON JERUK
JAKARTA, INDONESIA

IMAGE COURTESY OF THE ARTISTS AND ROH
PHOTOGRAPHY BY LIANDRO SIRINGORINGO





ROH

KEI IMAZU

Nyai Roro Kidul
2025
Iron plate, acrylic paint, fabric
Variable dimension



ROH

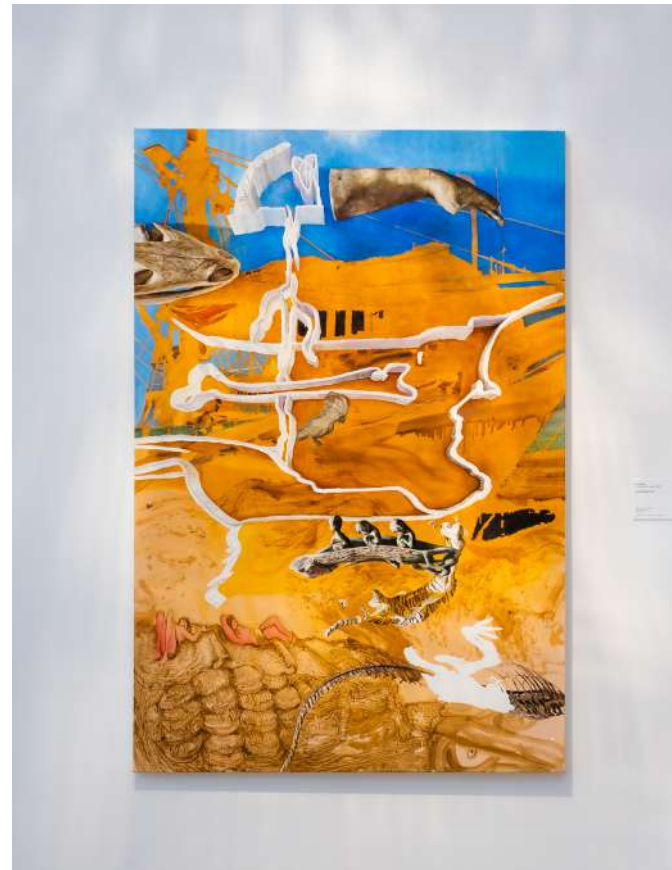


The Sea is Barely Wrinkled
2025
Oil on Canvas
300 × 1000 cm

ROH

KEI IMAZU

Sunda Kelapa
2024
Oil on canvas
194 × 130 cm





Cut Meutia
2025
Oil on canvas
100 × 80 × 3 cm



Tear down the Van Heutsz Monument
2025
Oil on canvas
250 × 202 × 4 cm



ROH

KEI IMAZU

Slanted Portico of the Batavia Fort
2025
Acrylonitrile butadiene styrene plastic (ABS),
polyurethane, resin, oil paint, sand
Variable dimension



ROH



The Land Lost to The Sea
2024
Oil paint on 3D-printed ABS
853 × 308 × 5 cm

ROH

KEI IMAZU

The Land Lost to The Sea
2024
Oil paint on 3D-printed ABS
853 × 308 × 5 cm



ROH

KEI IMAZU

Harbor View
2025
Oil on Canvas
250 × 202 × 4 cm



ROH

Command 1
2025
Lightbox, archival prints, watercolor, 3D printed
ABS, pigment, sand, shells, banknotes
32 × 120 × 16 cm



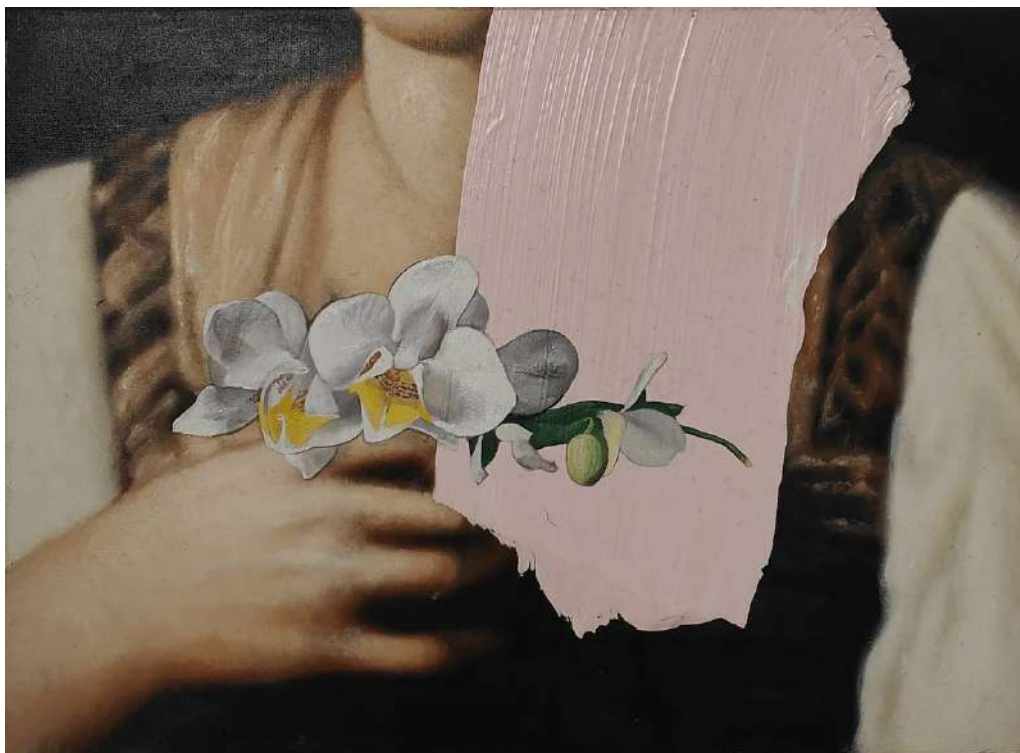
Command 2
2025
Lightbox, archival prints, watercolor, 3D printed
ABS, pigment, sand, shells, banknotes
32 × 120 × 16 cm



ROH

KEI IMAZU

Orchid on my heart
2018
Oil on Canvas
33 × 45.3 × 1.5 cm



ROH

KEI IMAZU

Tanggul Laut Muara Baru
2024
Oil on cutting board
28 × 13 × 5 cm



ROH

LAYERS OF ACCUMULATED TIME: DEPICTING THE
WORLD WE LIVE IN

YUSUKE ASAI
SAM FALLS
ASAKO FUJIKURA
KEI IMAZU
SACHIKO KAZAMA
WILLIAM KENTRIDGE
ANSELM KIEFER
AKI KONDO
TOMOYA MATSUZAKI
YU NISHIMURA
GERHARD RICHTER
CITRA SASMITA
WILHELM SASNAL
PEI-SHIH TU
LUC TUYMANS
EBOSI YUASA

29 APRIL – 28 SEPTEMBER 2025

21ST CENTURY MUSEUM OF CONTEMPORARY ART,
KANAZAWA

IMAGE COURTESY OF THE ARTISTS AND 21ST CENTURY
MUSEUM OF CONTEMPORARY ART, KANAZAWA
PHOTOGRAPHY BY KURODA TAKERU

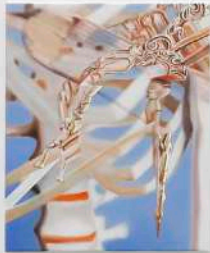




Memories of the Land / Body
2020
Oil on linen
300 × 600 cm



Mama Wulu
2021
Oil on canvas
60 × 50 cm



Bis Pole
2021
Oil on canvas
60 × 50 cm



Drowiness
2022
Oil on linen
194 × 162 cm

ROH

KEI IMAZU

Mermaid of Banda Sea
2024
Oil on canvas
200 × 300 × 4 cm
Variable dimension



ROH

TANAH AIR

KEI IMAZU

11 JANUARY - 23 MARCH 2025

TOKYO OPERA CITY ART GALLERY
3 CHOME-20-2 NISHISHINJUKU
TOKYO, JAPAN

PHOTOS COURTESY OF THE ARTIST



SATENE's Gate, Patasiwa 1-9, Patalima
1-5, Seram Rat, Boots Rat, Bird
2023
Iron, acrylic paint
Variable dimension





Hainuwele
2023
Oil on jute
350 × 800 × 4 cm













ROH





ここには
ハロゲン
照明が
設置され
ています
ご了承ください







ROH

BANGKOK ART BIENNALE: NURTURE GAIA

KEI IMAZU
BAGUS PANDEGA

24 OCTOBER 2024 - 25 FEBRUARY 2025

BANGKOK ART AND CULTURE CENTRE
BANGKOK, THAILAND

PHOTOS COURTESY OF THE ARTIST





ROH

KEI IMAZU & BAGUS PANDEGA

Artificial Green by Nature Green 4.0
2024

Painting and erasing machine installation, Water
paint on linen canvas, Modular synthesizer, LED
screen, PC, Palm oil tree
Variable dimensions



ROH

ART BASEL PARIS 2024
STRATUM VEIN

KEI IMAZU

16-20 OCTOBER 2024

ROH
BOOTH K44
EMERGENCE SECTOR

ART BASEL PARIS 2024
GRAND PALAIS
75008 PARIS
FRANCE

PHOTOS COURTESY OF THE ARTIST AND ROH







ROH

KEI IMAZU

The Land Lost to The Sea
2024
Oil paint on 3D-printed ABS
853 × 308 × 5 cm



ROH

KEI IMAZU

Sunda Kelapa
2024
Oil on canvas
194 × 130 cm



ROH

KEI IMAZU

*When I Opened The Front Door, Teapot in Hand, I
Found the Outside Was The Sea*
2024
Oil on canvas
100 × 150 cm



ROH

KEI IMAZU

Harbor Views
2024
Oil on canvas
100 × 80 cm



ROH

KEI IMAZU

Batavia's Flora and Fauna
2024
Oil on cutting board
19 × 19 × 5 cm



Tanggul Laut Muara Baru
2024
Oil on cutting board
28 × 13 × 5 cm





ROH

THE 7TH CHANGWON SCULPTURE BIENNALE:
SILENT APPLE

KEI IMAZU

27 SEPTEMBER - 10 NOVEMBER 2024

SEONGSAN ART HALL
GYEONGSANGNAM-DO, CHANGWON-SI,
SOUTH KOREA

PHOTOS COURTESY OF THE ARTIST AND ROH





SATENE's Gate
2023
Iron, acrylic paint
624 × 284 × 20 cm



ROH





ROH

LET'S SEE

KEI IMAZU
NANAMI HORI
MASAYA CHIBA
SHIMON MINAMIKAWA
ULALA IMAI
HIROSHI SUGITO
MASANORI TOMITA
YU NISHIMURA
YUI YAEGASHI
EMI MIZUKAMI
DAISUKE FUKUNAGA
REINA SUGIHARA
KAZUYUKI TAKEZAKI
SHUNSUKE IMAI
TEPPEI SOUTOME
MAKI KATAYAMA
KEN SASAKI
TOSHIYUKI KONISHI
TWIN BOAT SONGS

17 MAY - 28 JULY 2024

RUANG B
SELASAR SUNARYO ART SPACE
BANDUNG, INDONESIA

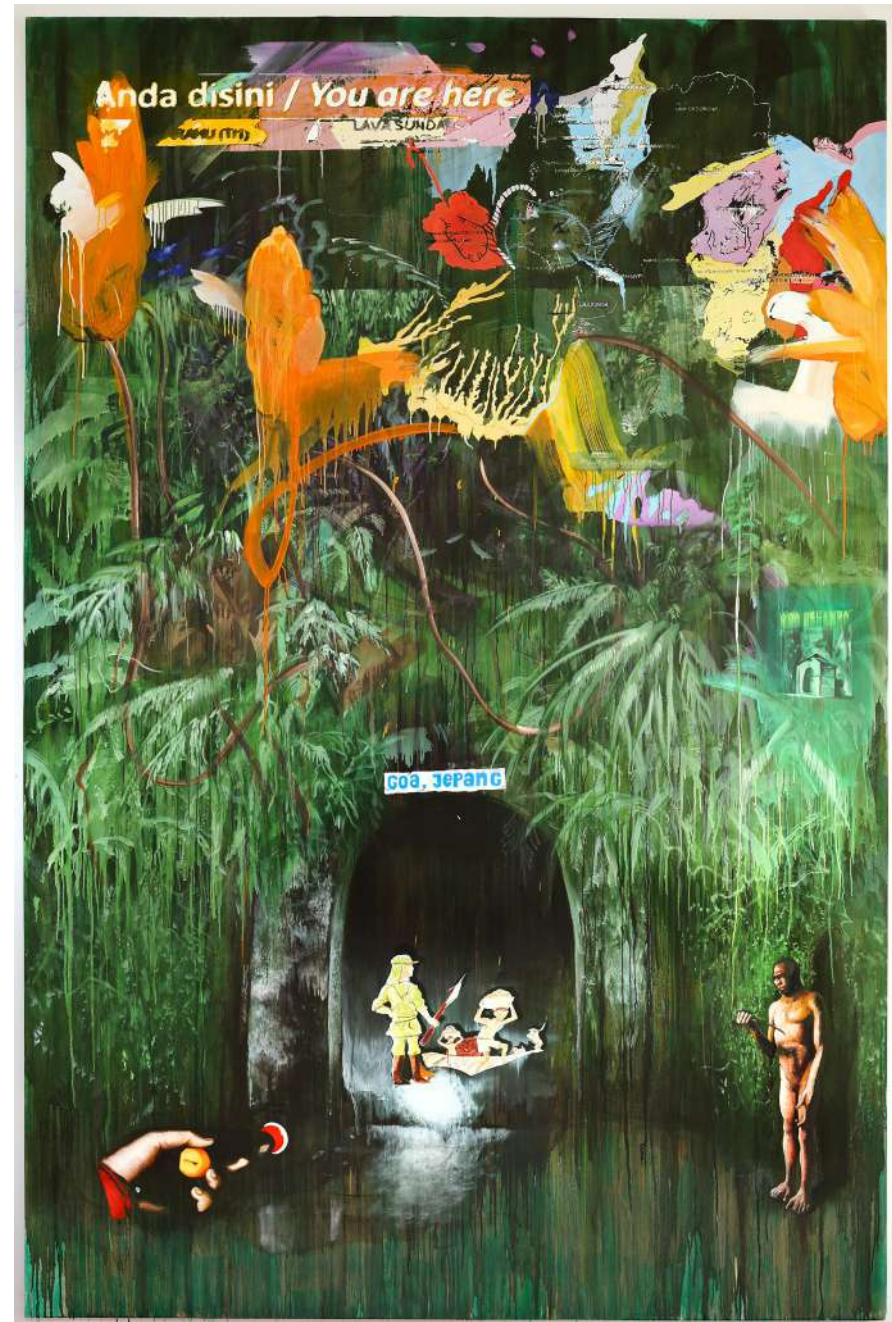
PHOTOS COURTESY OF THE ARTIST AND SELASAR
SUNARYO ART SPACE



ROH

KEI IMAZU

Anda Disini
2024
Oil on canvas
300 × 200 cm



ROH

TITICARA: MERUAH

DIAN SUCI RAHMAWATI
FIAMETTA GABRIELA
HILDAWATI SOEMANTRI
IPEH NUR
KEI IMAZU
LIZA MARKUS
MELATI SURYODARMO
NADYA JIWA SARASWATI
RATU R. SARASWATI

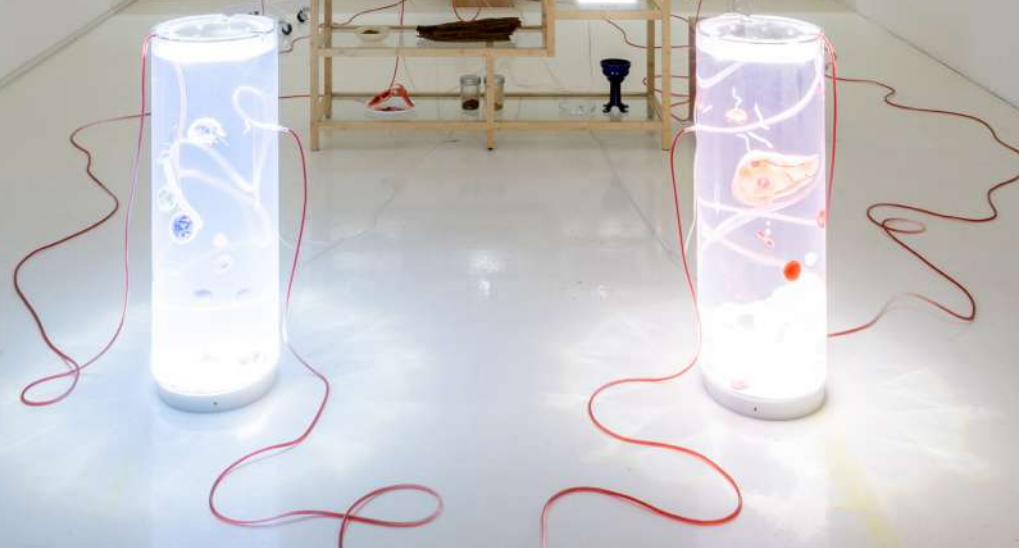
17 MAY - 28 JULY 2024

RUANG B
SELASAR SUNARYO ART SPACE
BANDUNG, INDONESIA

PHOTOS COURTESY OF THE ARTIST AND SELASAR
SUNARYO ART SPACE



NV BANDOENGSCHE
KININEFABRIEK



N.V. BANDOENGSCHE
KININEFABRIEK



ROH

ART BASEL HONG KONG 2024

ADITYA NOVALI
DAVY LINGGAR
EKO NUGROHO
KEI IMAZU
MELLA JAARSMA
SYAIFUL AULIA GARIBALDI
TROMARAMA
UDOMSAK KRISANAMIS

27 JANUARY - 25 FEBRUARY 2024

ROH
JALAN SURABAYA 66
JAKARTA, INDONESIA

PHOTOS COURTESY OF THE ARTISTS AND ROH



ROH

KEI IMAZU

mermaid of banda sea
2024
Oil on canvas
200 × 300 × 4 cm



ROH

KEI IMAZU

Under the Mango Tree
2024
Oil on canvas
100 × 80 × 3 cm



ROH

UNEARTH

11 NOVEMBER 2023 - 14 JANUARY 2024

ROH
JALAN SURABAYA 66
JAKARTA

IMAGE COURTESY OF THE ARTIST



ROH

KEI IMAZU

Girl's Waste
2023
Oil paint on polyurethane coated printed fabric
48 × 68 × 3 cm



ROH

KEI IMAZU

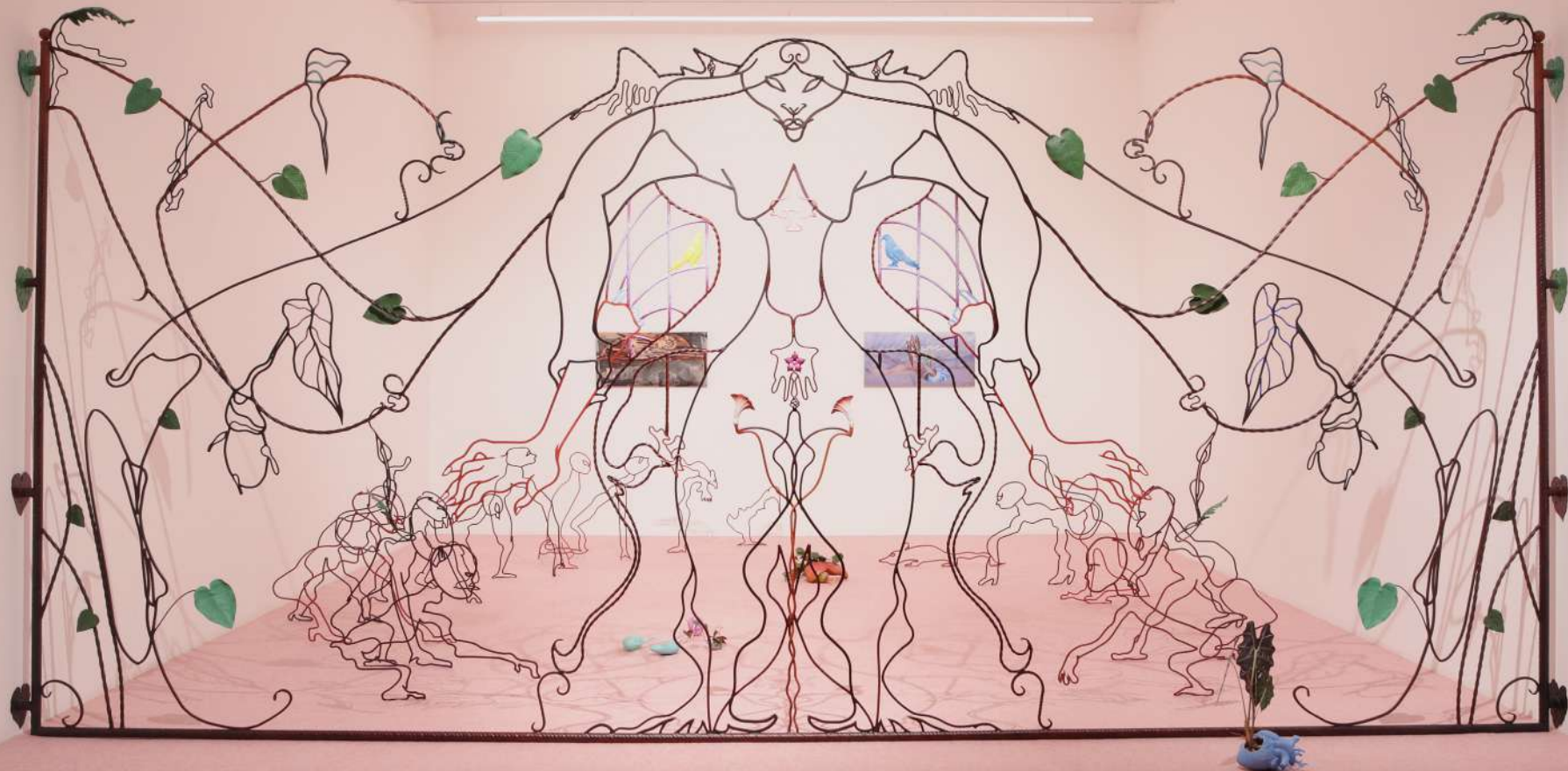
Leg

2023

Acrylonitrile butadiene styrene, polyurethane
paint, oil paint, plants

15 × 75 × 30 cm (the height of the work can
change at any time depends on the plant)





*SATENE's Gate, Patasiwa 1-9, Patalima
1-5, Seram Rat, Boots Rat, Bird
2023
Iron, acrylic paint
Variable dimension*

*Heart (Blue shade)
2023
Acrylonitrile butadiene styrene,
Polyurethane paint, oil paint, plants
15 × 24 × 16 cm (the height of the work
can change at any time depends on the
plant)*



Lush Terrain
 2023
 Oil paint on polyurethane coated printed fabric
 47 × 97 × 4 cm



Waving Strata
 2023
 Oil paint on polyurethane coated printed fabric
 47 × 97 × 4 cm

ROH

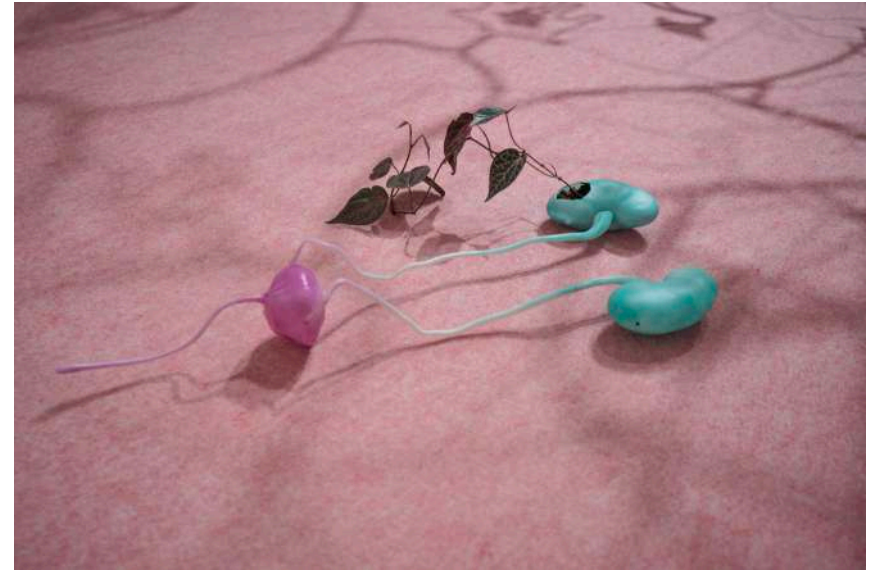
KEI IMAZU

Bladder and Kidney

2023

Acrylonitrile butadiene styrene, polyurethane
paint, oil paint, plants

13 × 83 × 31 cm (the height of the work can
change at any time depends on the plant)



Liver

2023

Acrylonitrile butadiene styrene, polyurethane
paint, oil paint, plants

15 × 34 × 35 cm (the height of the work can
change at any time depends on the plant)



ROH

KEI IMAZU

Flowing Heart
2023
Oil on linen
80 × 60 × 1.8 cm





Blue Roots

2023

Oil paint on polyurethane coated printed fabric
40 × 60 × 1.5 cm

Colon

2023

Acrylonitrile butadiene styrene, polyurethane
paint, oil paint, plants
20 × 68 × 53 cm (the height of the work can
change at any time depends on the plant)



ROH

KEI IMAZU

Fruits of Seram

2023

Oil paint on polyurethane coated printed fabric

48 × 68 × 3 cm



ROH

KEI IMAZU

Pelvis and Rhizome
2023
Oil on linen
194 × 162 × 4 cm





Hainuwele
2023
Oil on jute
350 × 800 × 4 cm

ROH

KEI IMAZU

Isle Digger

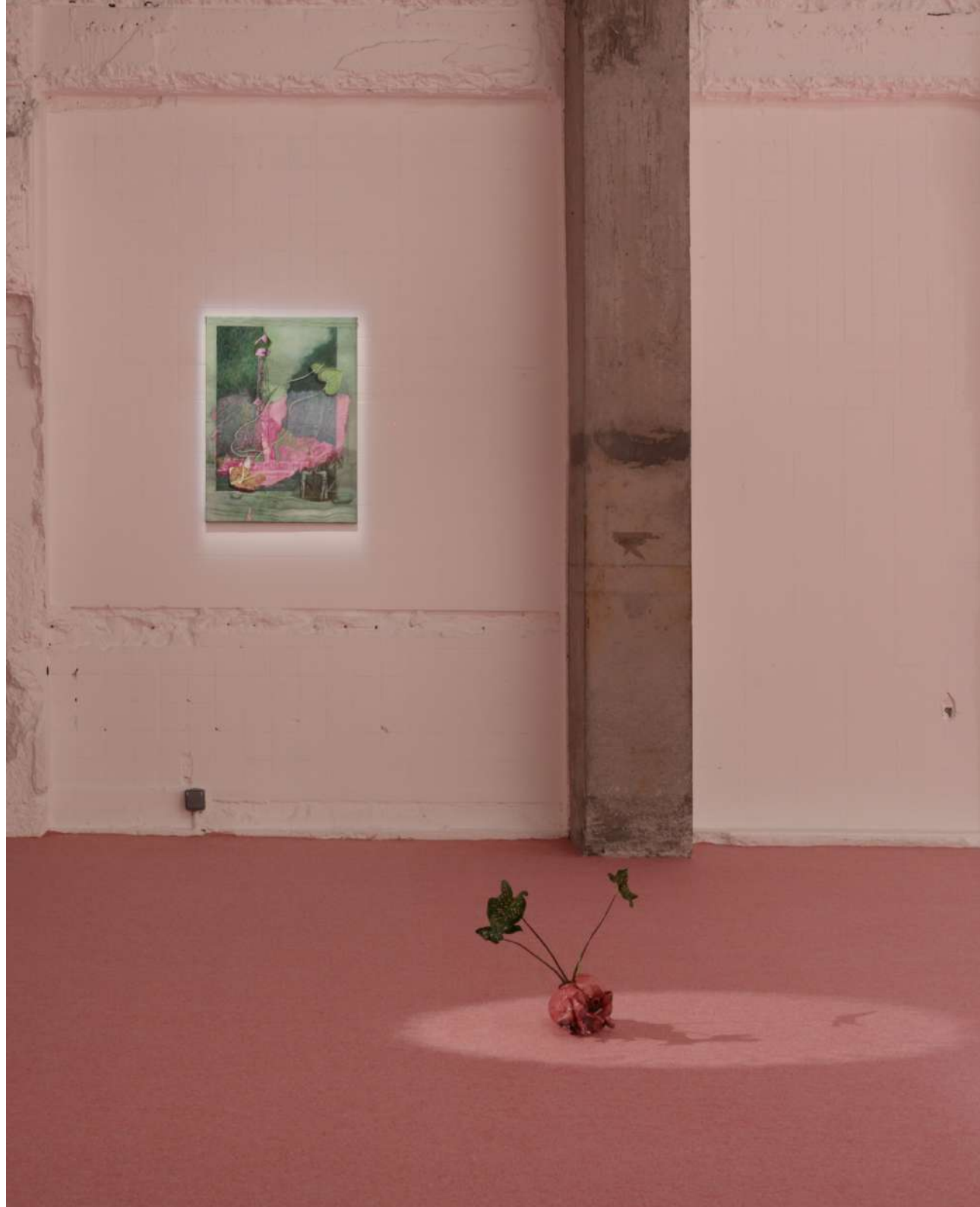
2023

Oil paint on polyurethane coated printed fabric
80 × 60 × 1 cm

Heart (Red shade)

2023

Acrylonitrile butadiene styrene, polyurethane
paint, oil paint, plants
15 × 24 × 16 cm (the height of the work can
change at any time depends on the plant)



ROH

KEI IMAZU

Femur of Homo erectus

2023

Acrylonitrile butadiene styrene, polyurethane
paint

41 × 240 × 57 cm



ROH

KEI IMAZU

Skull of Homo floresiensis
2023
Acrylonitrile butadiene styrene,
polyurethane paint
150 × 154 × 216 cm



ROH

KEI IMAZU

The Rain of Bullets

2023

Oil paint on polyurethane coated printed fabric
50 × 60 × 1.8 cm



Madako (魔ダコ)

2023

Oil paint on printed fabric
50 × 60 × 1.8 cm



ROH

KEI IMAZU

Lung

2023

Acrylonitrile butadiene styrene, polyurethane
paint, oil paint, plants

36 × 40 × 32 cm (the height of the work can
change at any time depends on the plant)



ROH

FRIEZE SEOUL 2023

AGUS SUWAGE
DAVY LINGGAR
DONGHO KANG
EIMEI KANEYAMA
HYUN NAHM
KEI IMAZU
KYOUNGTAE KIM
TROMARAMA

6 - 9 SEPTEMBER 2023

COEX MALL
513 YEONGDONG-DAERO
GANGNAM-GU, SEOUL

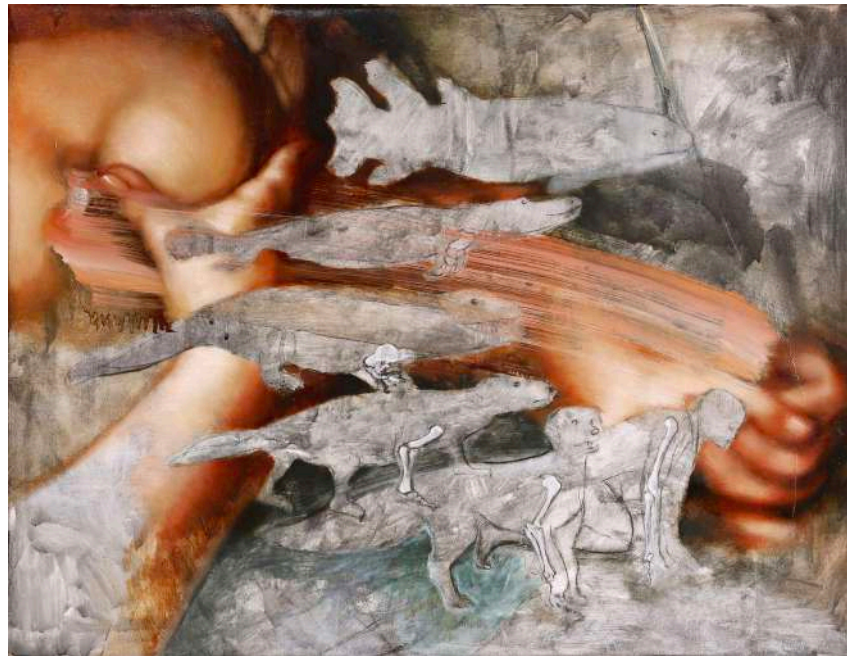
IMAGE COURTESY OF WHISTLE AND ROH
PHOTOGRAPH BY ROHSPACE



ROH

KEI IMAZU

Susu
2023
Oil on linen
60 × 80 cm



ROH

KEI IMAZU

Anatomy of A Flower

2023

Galvanized Iron, fabric, polyurethane paint

90 × 80 cm



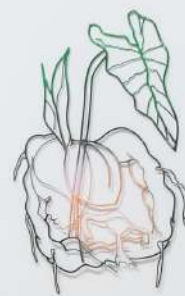
ROH

SOWED THEM TO THE EARTH

27 JULY - 9 SEPTEMBER 2023

JESSICA SILVERMAN GALLERY
621 GRANT AVE
SAN FRANCISCO, USA

PHOTOS COURTESY OF



ROH

KEI IMAZU

Blossoming Organs
2023
Oil on linen
200 × 350 × 4 cm



ROH

KEI IMAZU

Aroma Map
2023
Oil on linen
48 × 150 × 4 cm



Femur
2023
Oil on linen
20 × 60 × 1.8 cm



ROH

KEI IMAZU

Objects at Rest
2023
Oil on linen
48 × 150 × 4 cm



Curves of Time
2023
Oil on linen
60 × 80 × 1.8 cm



ROH

KEI IMAZU

Green Veins / Falling Goddess
2023
Oil on linen
150 × 150 × 4 cm



ROH

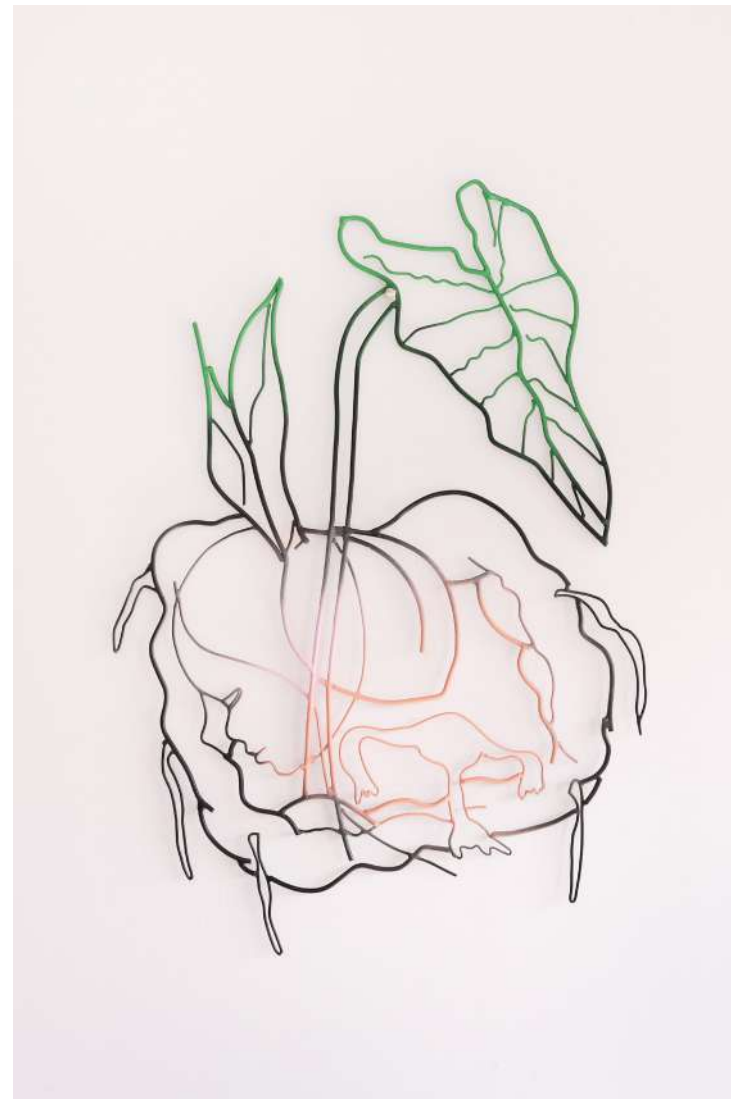
KEI IMAZU

Hainuwele in Cerulean Blue
2023
Oil on linen
80 × 60 × 1.8 cm





Harvested Body
2023
Automotive paint on galvanized steel wire
74 × 70 × 1 cm



Warm Viscera
2023
Automotive paint on galvanized steel wire
57 × 82 × 1 cm

ROH

KEI IMAZU

Shadows in the Footsteps of Ancestors
2023
Oil on linen
100 × 120 × 2.5 cm



ROH

KEI IMAZU

Strata
2023
Oil on linen
80 × 60 × 1.8 cm



ROH

KEI IMAZU

Talas and Goddess
2023
Oil on linen
60 × 20 × 1.8 cm

Sprouting from My Hands
2023
Oil on linen
60 × 20 × 1.8 cm



ROH

ALTERNATIVE SEA FOR ASIA

KANG HONGGOO
KIM SEUNGYOUNG
KIM CHEONIL
KIM WHANKI
NAKAMURA KAZUMI
LEE YIHHONG
MURAI HIRONORI
PAIK NAMJUNE
OH JIHO
UCHIDA AGURI
YUAN HUILI
KEI IMAZU
CHEN YUJUNG
HEO GEON
HEO BAEKRYUN
HUANG BOHAO

11 APRIL - 15 JULI 2023

JEONNAM MUSEUM OF ART
660 SUNGWANG-RO, GWANGYANG-SI
JEOLLANAM-DO
SOUTH KOREA

PHOTOS COURTESY OF JEONNAM MUSEUM OF ART



ROH

KEI IMAZU

Survival

2019

Oil on canvas, Digital print on vinyl

292 × 388 cm (canvas), 1,100 × 295 cm (2 sheets)

Collection of Ueshima Collection



ROH

KIWARI

ARAHMAIANI
CHRISTINE AY TJOE
DOLOROSA SINAGA
EMIRIA SOENASSA
ETZA MEISYARA
I GAK MURNIASIH
INDIEGUERILLAS
KEI IMAZU
MELATI SURYODARMO
MELLA JAARSMA
NADIAH BAMADHAJ
RITA WIDAGDO
SINTA TANTRA
SYAGINI RATNA WULAN
TROMARAMA
WINDI APRIANI

21 MEI - 21 NOVEMBER 2023

TUMURUN MUSEUM
JL. KEBANGKITAN NASIONAL NO.2, RW.4, SRIWEDARI
SURAKARTA, JAWA TENGAH

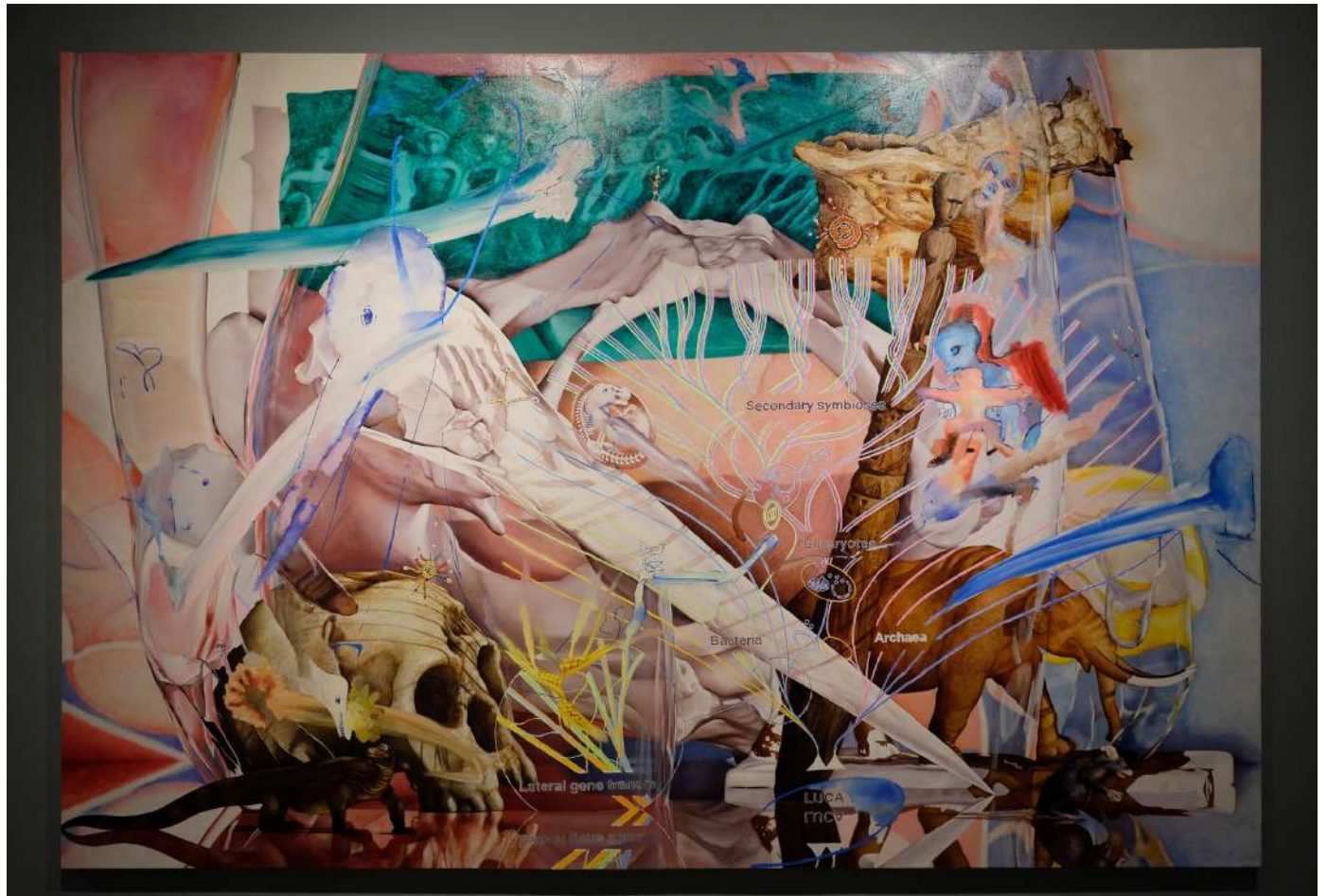
PHOTOS COURTESY OF TUMURUN MUSEUM AND
THE ARTIST



ROH

KEI IMAZU

Endosymbiosis
2022
Oil on linen
200 × 300 cm



ROH

ART BASEL HONG KONG 2023

ADITYA NOVALI
AGUNG KURNIAWAN
ARIN DWIHARTANTO SUNARYO
BAGUS PANDEGA
DAVY LINGGAR
KEI IMAZU
MARUTO
MELLA JAARSMA
NADYA JIWA
SYAGINI RATNA WULAN
SYAIFUL AULIA GARIBALDI
TROMARAMA

21 – 25 MARCH 2023

ROH
HONG KONG CONVENTION AND EXHIBITION CENTRE
1 EXPO DR, WAN CHAI
HONG KONG

PHOTOS COURTESY OF THE ARTISTS AND ROH



3C06
RCH Projects
akana

Encounters

Malia Jarama
the

film

via roads,
tomaraka

3C06
RCH Projects
akana

Encounters

Malia Jarama
the

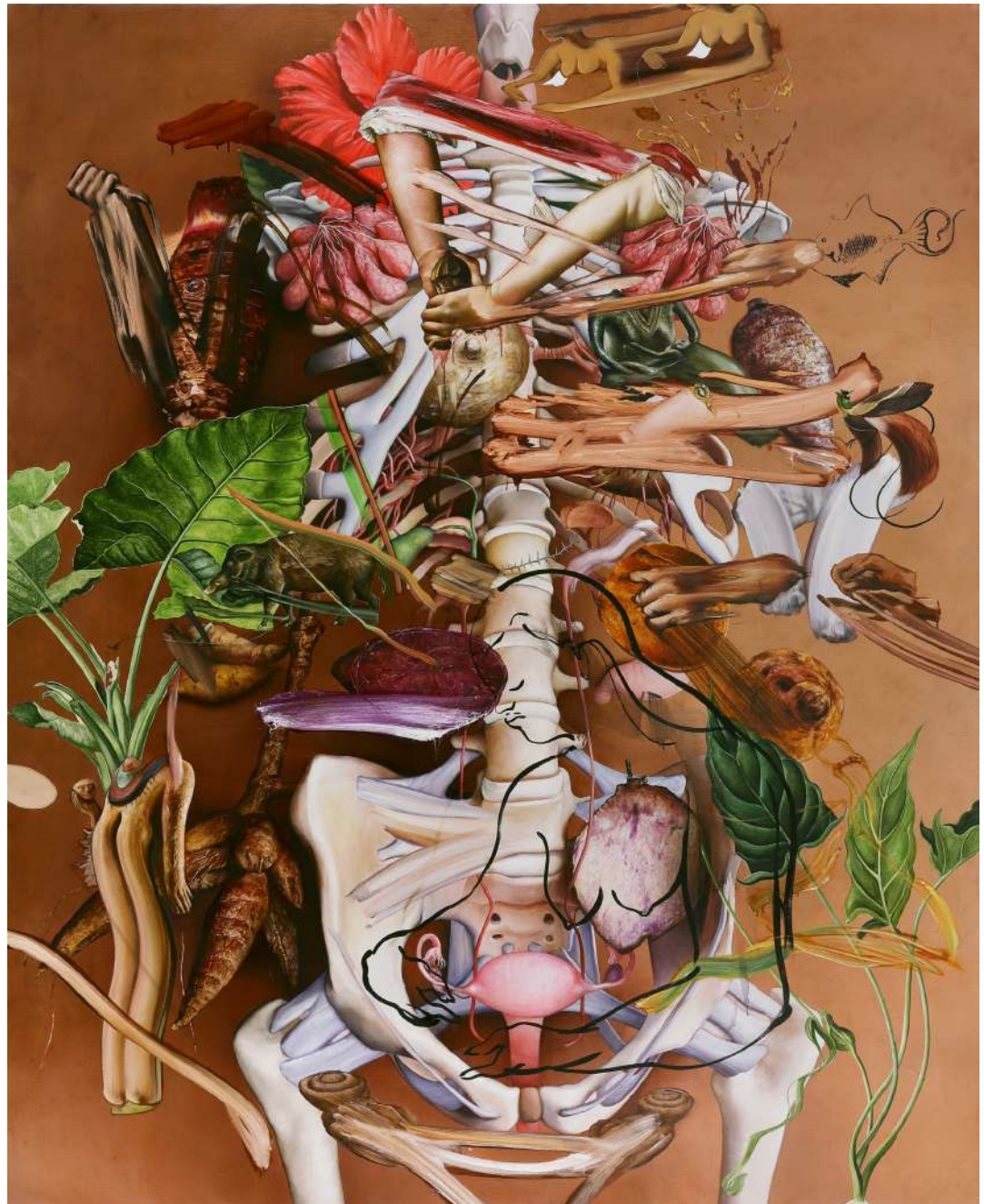
film

via roads,
tomaraka

ROH

KEI IMAZU

Harvesting from the Buried Goddess Body
2023
Oil on linen
250 × 202 cm



ART COLLABORATION KYOTO

KEI IMAZU
NADYA JIWA
TROMARAMA

18 - 20 NOVEMBER 2022

ROH X ANOMALY, GALLERY COLLABORATIONS
KYOTO INTERNATIONAL CONFERENCE CENTER, JAPAN

PHOTOS COURTESY OF THE ARTISTS



ROH

KEI IMAZU

Curiosity Cabinet from Ambon
2022
Oil on linen
194 × 194 cm



ROH

KEI IMAZU

Drowsiness
2022
Oil on linen
194 × 162 cm



ROH

KEI IMAZU

Nautilus Goblet
2022
Oil on linen
40 × 60



ART BASEL MIAMI BEACH

KEI IMAZU

1 – 3 DECEMBER 2022

MIAMI BEACH CONVENTION CENTER

PHOTOS COURTESY OF SHAUN ROBERTS

ROH

KEI IMAZU

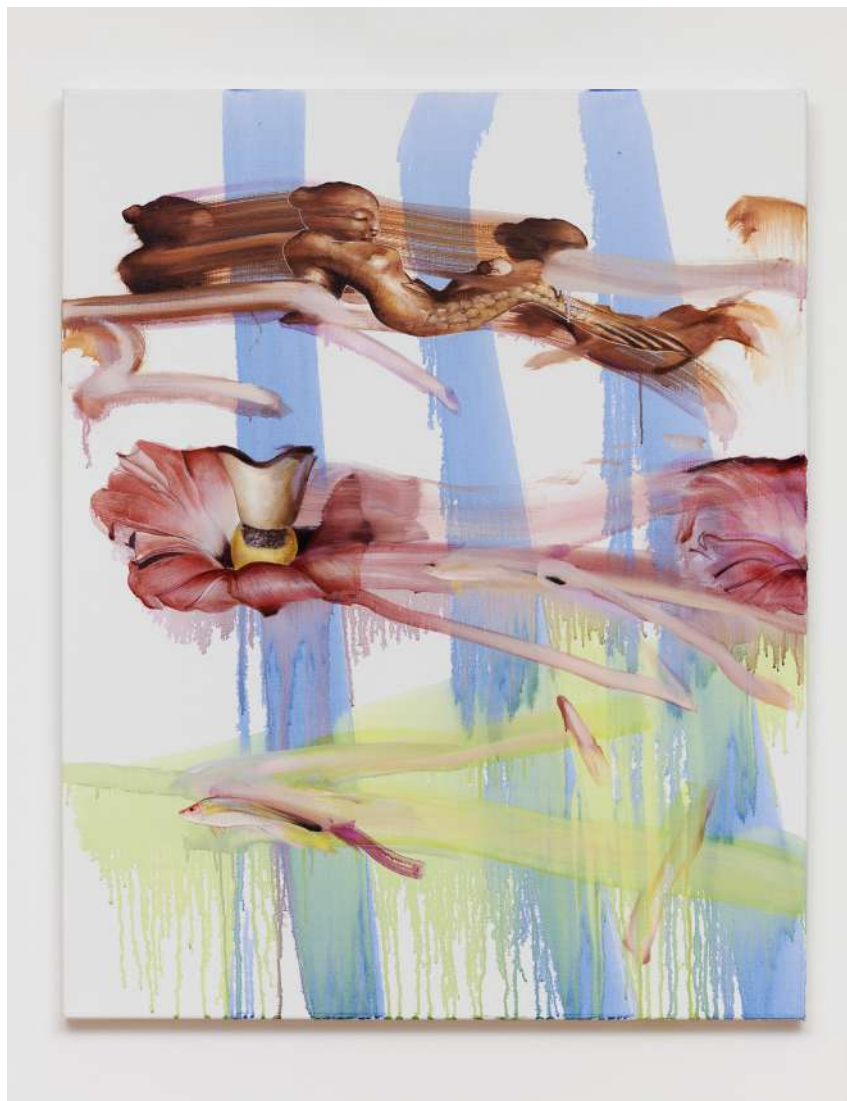
Mermaids
2022
Oil on linen
194 × 194 cm



ROH

KEI IMAZU

Little Fish and Big Flower
2022
Oil on linen
100 × 80 cm



FRIEZE SEOUL 2022

BAGUS PANDEGA
KEI IMAZU

2 - 5 SEPTEMBER 2022

ROH
COEX MALL
SEOUL, SOUTH KOREA

PHOTOS COURTESY OF THE ARTISTS AND ROH

Bagus Pandega (b. 1985, Jakarta, Indonesia) and Kei Imazu (b.1980, Yamaguchi, Japan) focus respectively on kinetic multimedia installations and painting respectively, and they reside in Bandung, Indonesia. Despite building further upon their own distinctive aesthetic languages, the two artists have been building a body of collaborative work as well that delves into the relationships between ecological and sociopolitical histories of their surrounding environments. In the case of their presentation at Frieze Seoul, they draw reference from the local colloquialism *Tanah Air*, literally translated as “land and water”, but metaphorically as the entire archipelago of Indonesia.

This new body of work is based on research upon the Lusi Isle on the coast of Sidoarjo, East Java. The name Lusi is a portmanteau for *Lumpur Sidoarjo* (Sidoarjo Mud), a 94-hectare island that was formed due to the largest recorded mud volcano spillage in recorded history. In 2006, the first hot mud eruption occurred from a natural gas well at Sidoarjo Regency, East Java, which has not ceased until now and has been declared a national disaster. The mud has since then continued flowing into the Porong River, resulting in the shallowing of the riverbed and has gradually formed the Lusi isle. The eruption has displaced thousands of people in the surrounding villages and communities, as well as causing billions of dollars worth of damage to infrastructure, property, and ecology. The mineral content of both water currents and soil topographies surrounding the site have been altered in an intractable manner.

In a series of interviews with a local shrimp farmer, they discovered that local aquaculture farmers have found means to recover their livelihoods through innovations in ecological harvesting strategies by planting mangrove plantations in select locations to filter the water from the mineral impurities and sediment caused by the Lusi disaster. The mangrove plantations have also allowed for the possibilities of a new ecosystem involving mangrove crabs, fin fish, and clams. Whenever the water becomes overflowed by the mud once again, the crabs and other lifeforms begin to die and float around the mangrove roots, signaling the farmers to fix the possibly broken embankment. The clams also act as biological water indicators and are also cultivated to filter and absorb hazardous materials from the water. The development of these strategies, alongside other ingenious responses, are made possible and have been kept intact by the local communities of aquaculture farmers, all working collaboratively to help each other adapt and survive.

Based on their observations, Imazu has developed a new body of work consisting of *When Facing the Mud (Response of Shrimp Farmers in Sidoarjo)* (2022), an expansive diptych depicting an aerial view of Lusi and its mudflow towards the ocean, as well as the geographical locations of mines and strata of soil that depict layers of time in its topography. Imazu's painting places in juxtaposition with each other a map of the Porong Regency with scenes from a shrimp farmer's personal narrative and biological cycles putting in picture the silvofishery system. To further illustrate life after the disaster, Imazu shows *When Facing the Mud (Putra)* (2022), a two-channel video projection on a pair of silkscreen that presents their conversations with a local shrimp farmer. Imazu has also developed a number of intimately scaled paintings to further express more quotidian textures pertaining to the interviewed farmer and his daily cycle of life.

In conversation, Pandega has developed *Cycle* (2022), a complex DIY 3D-printing machine that utilizes mud samples taken directly from Lusi Isle as a medium and prints sculptures throughout the duration of the presentation in a constant cycle based on the mud. *Cycle* prints architectural structures constantly based on a decrepit house Pandega came across as he visited Lusi. Every day, *Cycle* will be constructing the mud house repeatedly, then destroyed repeatedly, in a continuous manner.

ROH

In addition to the constantly house-building 3D-printed machine, Pandega will also show *Grey Pool* (2022), a sculptural visualization of the mud spillage. An aerial mapping of the affected area made out of Plexiglass is attached to a mist machine representing the continuity of the mud spillage today.

In both the works of Imazu and Pandega, destruction and regeneration are not binary concepts that interject upon each other, but instead form necessary conditions by which the other exists. The emphasis on the project, therefore, is not so much as critique towards manmade disasters or the anthropocene, but rather in relation to our capacity to be resilient and adaptive to the ever-changing.





KEI IMAZU



When Facing the Mud (Response of Shrimp Farmers in Sidoarjo)
2022
Oil, acrylic, mud, UV print on linen
388 × 194 cm

When Facing the Mud
2022
2 channel FHD, silkscreen on wooden frame
11 min 57 sec

WAGIWAGI

HOW HO
ANCHI LIN
HSIN-CHIEH HUNG
KAY HUNG AND ORBIT LIN
TFRI SHU-HUI WU AND TZU-FEN LIN
CHIH-HUA HUANG
YI-PIN HUANG
BAGUS PANDEGA AND KEI IMAZU
CELYN BRICKER
ALIANSYAH CANIAGO
SHARO LIANG
KE-TING CHEN
WEI-CHIEH HUANG

18 JUNE – 25 SEPTEMBER 2022

DOCUMENTA FIFTEEN
HÜBNER AREAL
AGATOFSTRASSE 15
KASSEL, GERMANY

PHOTO COURTESY OF THE ARTISTS AND DOCUMENTA
FIFTEEN

“WAGIWAGI” attempts to explore the island ecosystem from a non-human-centered perspective, including the creation of multiple groups of artists responding to natural environment issues such as sunlight, plants and land, as well as the basic system design in the architectural space. Through the dialectical thinking of the system “resource-commoner-institution”, and “island” may be an alternative field created in the process of identification, exploration, establishment, resistance, running-in and negotiation, pointing to A certain life practice of “living together” in stages also includes reflection on various reasons for “not being able to live together”.

In Speculative Ecologies: Plotting Through the Mesh, hypertext and multi-centrism are given priority ; multiple groups of authors point out that hypertext does not obscure the fact that it is a medium, its structure and effects on receivers are contrary to a linear perspective. As well as the scientific paradigms of the past establishing the human knowledge base, multi-centrism is a natural and generous way of constructing environmental ethics. (p.18-19).

However, after the 20th century, the Internet has brought about the drastic speed of change in modern society, making hypertext and multi-centricism challenging the only center and peripheral changes in the existing class system, reflecting the urban development, ecological evolution, landscape in which we live. In culture, the design of survival strategies and institutional changes reflect that the future field is unknown and changeable, more drastic than traditional agricultural society.

When we realize that concentric circleism leads to competition, advantage, invasion and succession in the ecological process, it is also manifested in the development of cities in various countries. In order to reduce the center distance and marginalization of physical space, multi-coreism has evolved along with decentralization. The democratization of and declassification seems to create fluidity and diversity within this range. In cross-cultural and interdisciplinary discussions, islands carry the collective interweaving of paradigms, ideas, emotions, labor, language, civilization, etc. We step into the tropics to discuss the problems and challenges faced by rainforests, practical exchanges bring people together in an innovative environment, reface the environmental problems we are in, and then solve short, medium and long-term problems and dialogues.

Borrowing from JB Jackson ‘s research on cultural landscape, cultural landscape is not static, but a constantly changing relationship between human and land. Landscape has two functions simultaneously in social life: on the one hand, it is a place created by human beings and the result of joint labor, but on the other hand, it structures the way we see things and operates on an ideological level. In addition to original ecological records, research and creation of ecological issues, team interaction and workshops, what is more important is to observe the interactive process of reconnecting with the land after returning to nature, and then using this experience to construct a new the environmental art practice model interprets the cross-border ecological relationship and the vision of the fate of people and species, and promotes academic and cultural exchanges and alternative narratives without borders.

Therefore, it brings out the scope of observation of the art project of “WAGIWAGI”, and the sunlight, plants and land in the natural ecology are used as the text. In the geographical Austronesian Siraya and Atayal languages, “Wagi” represents the sun; Wagiwagi means greeting to

nature, and also What a great idea! The Chinese translation “Wa” represents the tile, which carries the media of the boundary between nature and human; the former “Gi” means collective and collaborative; the latter “Gi” echoes the identity and belonging of all things.

The natural environment inspires us to explore the interpretation of the living field, to find the face and meaning of this island land. Irish poet Seamus Heaney once said, “To know who you are, you have to have a place to come from”. We have lots of local feelings, but we must first recognize where we come from – human perspective, or non-human center dimension, what is the positive role of ecology in this field? How to carry out civic open governance? How far will science lead us? This will be the challenging journey full of uncertainty. With the development of society and economy and the rise of cities, consumption activities in densely populated areas have led to alienation and unfamiliarity with nature. How can we care for ecology from urban living?

Today, we choose to get close to nature, re-understand the history and the present of the land, and explore spatial scenes and regional emotions through the reconnection of people and the environment; reading the topographical writings written by writers, once again opening a different dimension of life vision. The contemporary interpretation of the ancient's “harmony between man and nature” adds some imaginary space to the contemporary ethical concept of harmonious coexistence between man and nature. When greenery enters the house, integrates into the daily life and serves as a bridge for sustainable life, how can we use our existing life experience to re-understand the people and land in our hometown, and look back at the current nature and human life texture from the future.

SUAVEART from Taiwan and Jatiwangi Art Factory from Indonesia built a space of about 300 square meters in Majalengka, West Java, which serve as a cultural exchange center between Taiwan and Indonesia, providing the dynamic platform for cultural researchers and global citizen. Combined with Taiwanese architect design, the construction method is taken from the local with bamboo, wood and brick as the main materials. It is closely connected with the local cultural community while responding to the current low-carbon emissions. The construction process is unveiled simultaneously in Indonesia and at documenta fifteen Kassel, Germany in 2022.

ROH

BAGUS PANDEGA AND KEI IMAZU

The Fertile Land
2022
Fabric collage, acrylic on canvas
160×300cm



DECLARING DISTANCE
BANDUNG – LEIDEN

ARNOUD ARPS
ATEP KURNIA
AUDYA AMALIA
AULIA IBRAHIM YERU
BAGUS PANDEGA AND KEI IMAZU
ESTHER CAPTAIN
ERNST KAREL AND VERONIKA KUSUMARYATI
FAJAR ABADI (GELANGGANG OLAH RASA)
FAUZIE WIRIADISASTRA
HAMMAD ZAHID MUHARRAM
IGNATIUS BAMBANG SUGIHARTO
MARIEKE BLOEMBERGEN
RIAR RIZALDI
RIDWAN HUTAGALUNG
RITA VICTORIA SIMANJUNTAK
RIZKI LAZUARDI
SADIAH BOONSTRA
SUNDEA
TEGUH PERMANA
THEIO FRIDS HUTABARAT
TRI JOKO HER RIADI
YOSEFA AULIA
ZALDY ARMANSYAH
ZICO ALBAIQUNI

8 APRIL – 29 MAY 2022

BALE TONGGOH
SELASAR SUNARYO ART SPACE
BANDUNG, INDONESIA

PHOTOS COURTESY OF THE ARTISTS AND SELASAR
SUNARYO ART SPACE

BAGUS PANDEGA AND KEI IMAZU

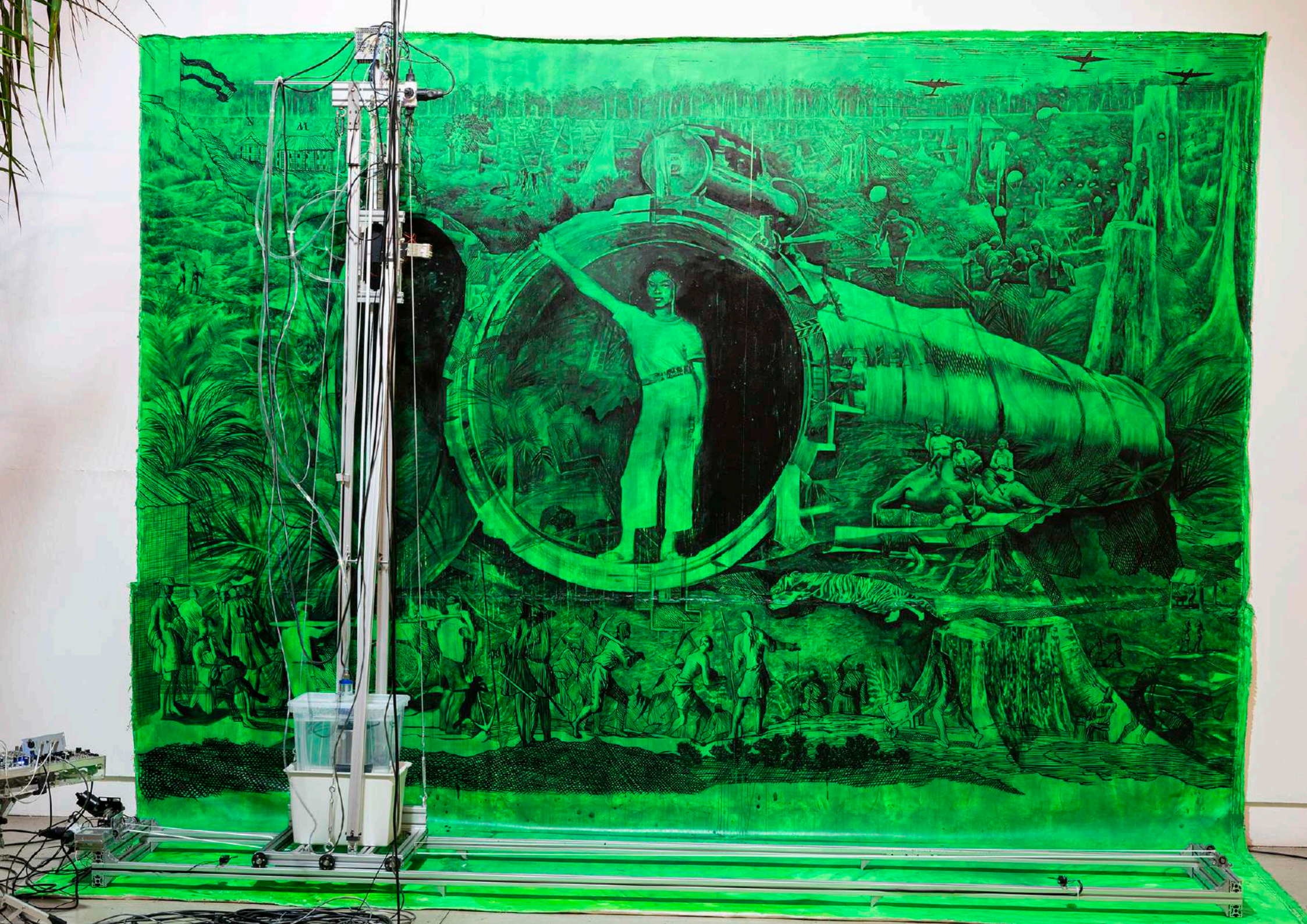
Artificial Green by Nature Green 3.0

2022

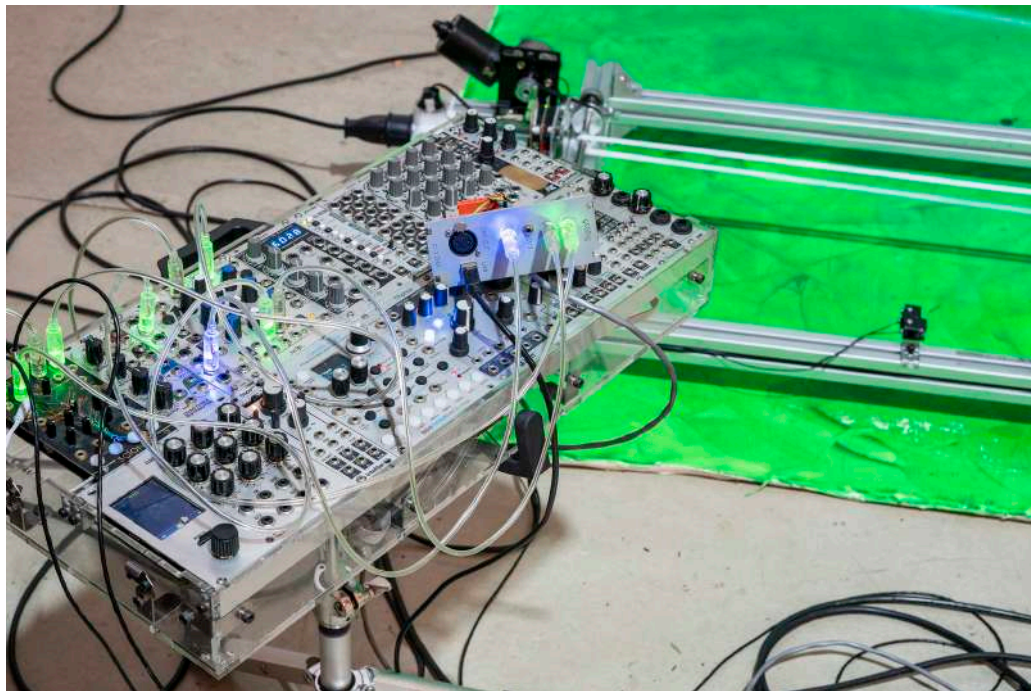
Painting and machine installation, water-based
paint and Cyanobacteria on canvas, modular
synthesizer, oil palm

Variable dimension





ROH







WE PAINT!

FARAH ATASSI
JANIS AVOTINS
ZANDER BLOM
CHLOË SAÏ BREIL-DUPONT
GUILLAUME BRESSON
SOL CALERO
NICOLAS CHARDON
MATHIEU CHERKIT
JEAN CLARACQ
PHILIPPE DECRAUZAT
STELIOS FAITAKIS
JONATHAN GARDNER
MIRYAM HADDAD
KEI IMAZU
FLORIAN KREWER
ALEXANDRE LENOIR
TURIYA MAGADLELA
MAUDE MARIS
LANDON METZ
ANNE NEUKAMP
GAVIN PERRY
TOYIN OJIH ODUTOLA
LI QING
RAPHAËLLE RICOL
NICOLAS ROGGY
MATT SAUNDERS
PIERRE SEINTURIER
AVERY SINGER
PATRICIA TREIB
SOIL THORNTON
LESLEY VANCE
REZI VAN LANKVELD
MARINE WALLON

24 MARCH – 24 APRIL 2022

PALAIS DE BEAUX-ARTS
14 RUE BONAPARTE
75006 PARIS, FRANCE

PHOTOS BY ROMAIN DARNAUD
COURTESY OF BREDIN PRAT FOUNDATION



Mark Rothko
1911-1970
American Abstract Expressionist
Born in Lithuanian Jewish immigrants in Newark, New Jersey
Studied at the Art Students League of New York
Co-founded the Abstract Expressionist movement
Known for his color field paintings
His work was characterized by soft-edged, blended colors
and a focus on the emotional and psychological effects of color
He was a member of the New York School
His work was often controversial and he was sometimes
criticized for being too abstract
He died of a heart attack in 1970



LUCADELLAROBBIACORRECE

ROH

KEI IMAZU

Last Universal Common Ancestor
2022
Oil on linen
200 × 135 × 5 cm



ART JAKARTA GARDENS

ADITYA NOVALI
ARIN DWIHARTANTO SUNARYO
FAISAL HABIBI
KEI IMAZU
SYAIFUL AULIA GARIBALDI
TROMARAMA
UJI "HAHAN" HANDOKO

7 – 14 APRIL 2022

ROH
HUTAN KOTA BY PLATARAN
JAKARTA, INDONESIA

PHOTOS COURTESY OF THE ARTISTS AND ROH



B5

ROH



ROH

KEI IMAZU

Hunter (Gray)
2022
Oil on canvas
100 × 80 cm



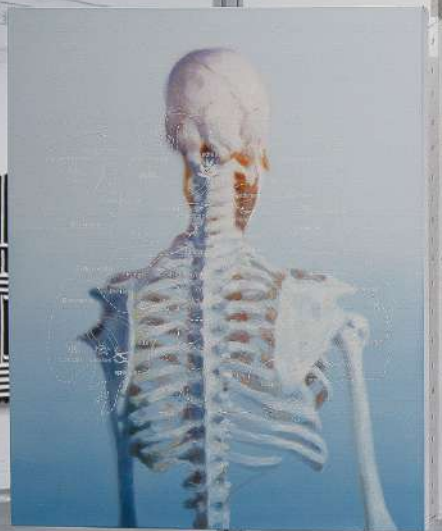
ADITYA NOVALI
ARIN DWIHARTANTO SUNARYO
BAGUS PANDEGA
DAVY LINGGAR
FAISAL HABIBI
KEI IMAZU
LUQI LUKMAN
MARUTO
MEI HOMMA
MELLA JAARSMA
NADIRA JULIA
NADYA JIWA
SYAGINI RATNA WULAN
SYAIFUL AULIA GARIBALDI
TROMARAMA
UJI "HAHAN" HANDOKO

31 MARCH – 21 MAY 2022

ROH
JALAN SURABAYA 66
JAKARTA, INDONESIA

PHOTOS COURTESY OF THE ARTISTS AND ROH

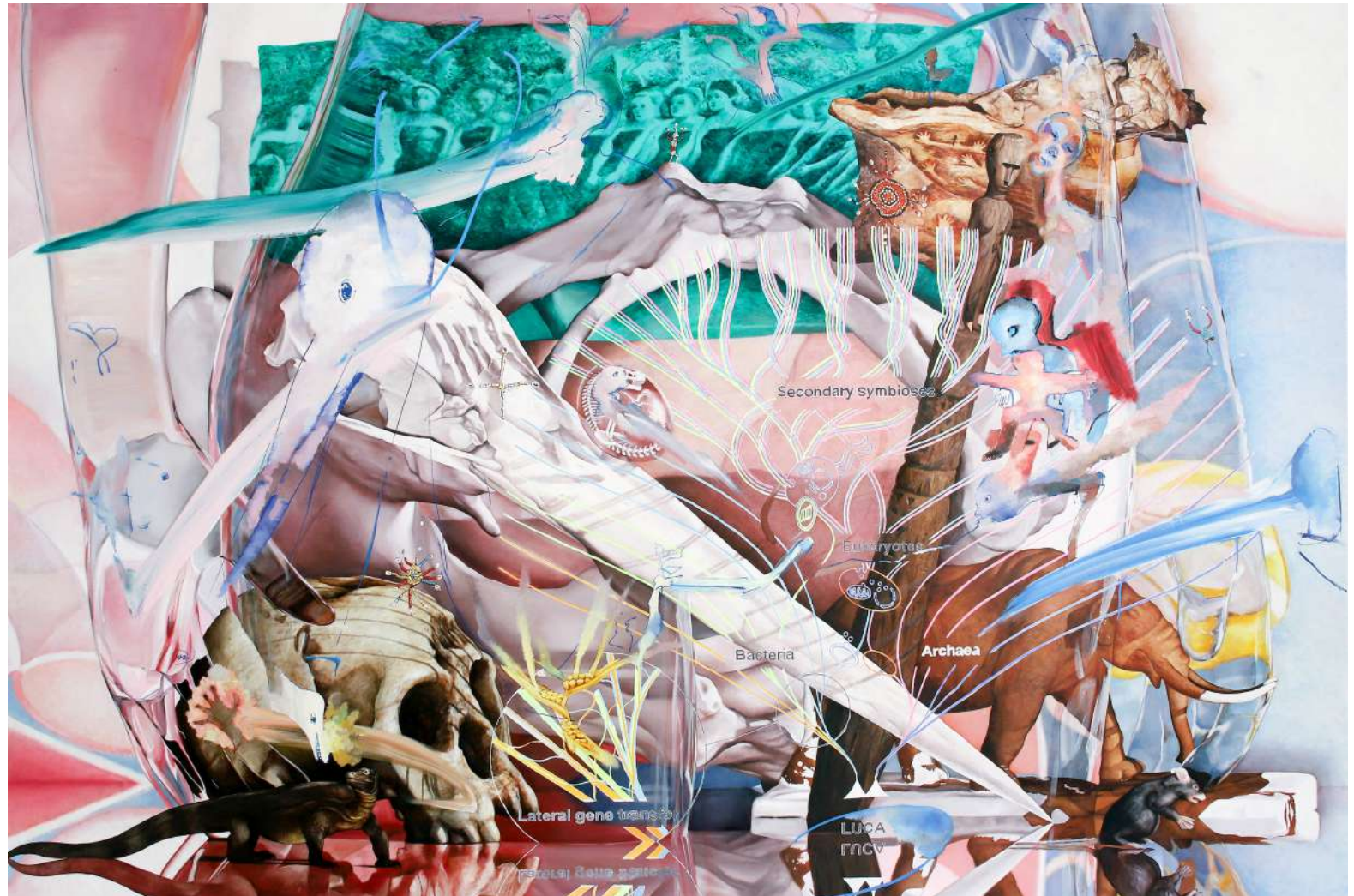




ROH

KEI IMAZU

Endosymbiosis
2022
Oil on linen
200 × 300 cm



ROH

KEI IMAZU

Ambone Mermaid
2022
Oil on canvas
100 × 80 cm



ROH

KEI IMAZU

The Cosmos on Your Back
2022
Oil on canvas
100 × 80 cm





ROH

KEI IMAZU

Hunter (Yellow)
2022
Oil on canvas
100 × 80 cm



MAPPING THE LAND/BODY/STORIES OF ITS PAST

KEI IMAZU

2 OCTOBER – 7 NOVEMBER 2021

ANOMALY

1 CHOME-33-10 TERRADA ART COMPLEX I 4F
SHINAGAWA CITY
TOKYO, JAPAN

PHOTOS BY KEIZO KIOKU

COURTESY OF THE ARTIST AND ANOMALY



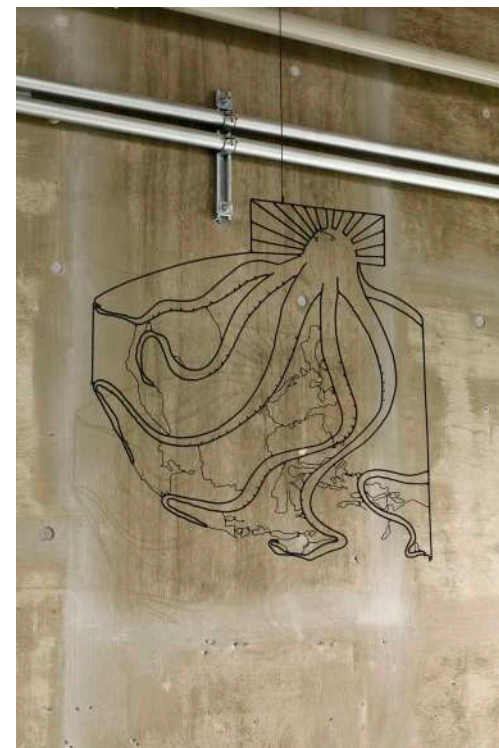
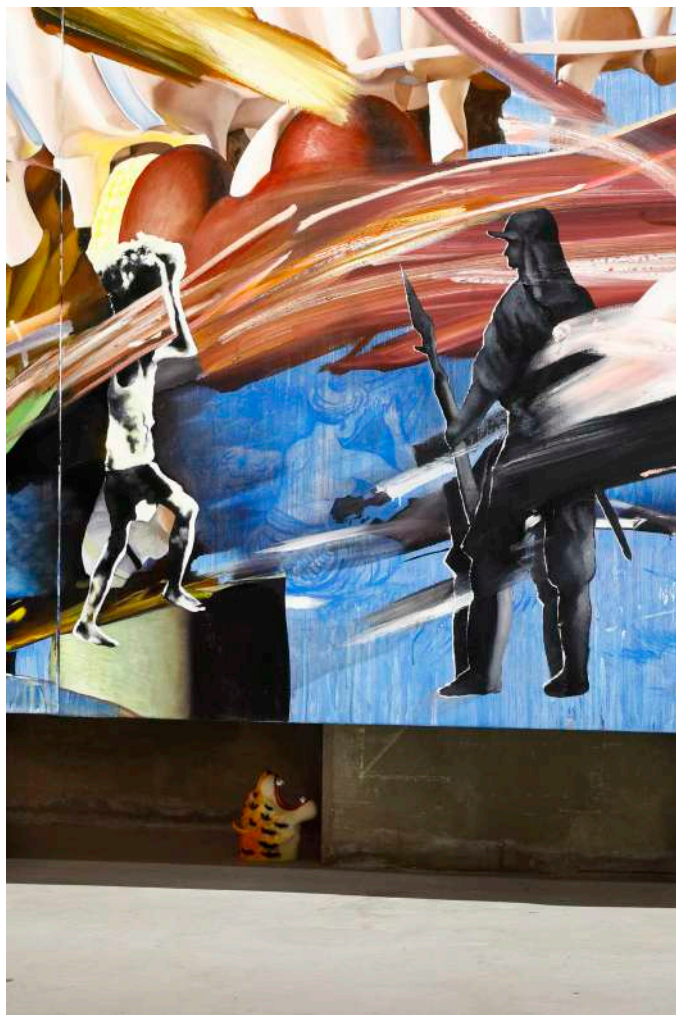








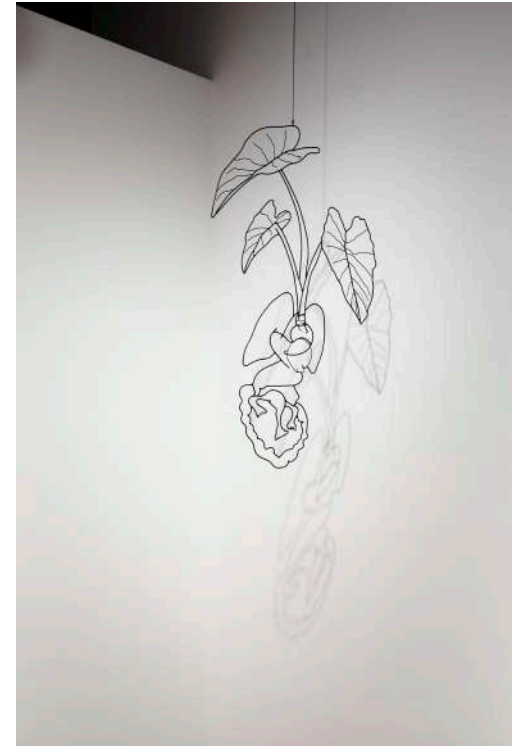
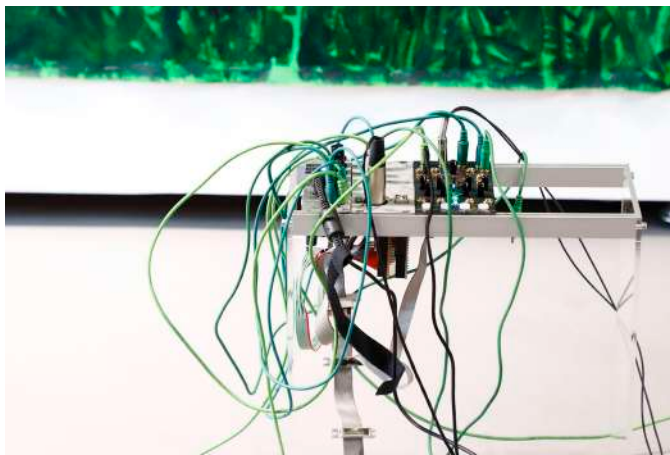
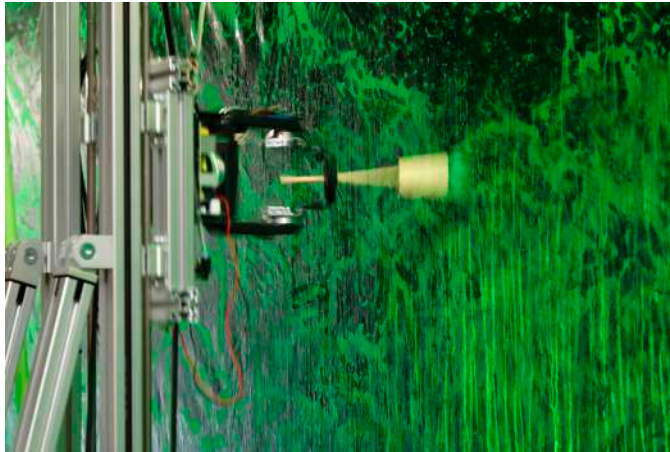
ROH







ROH



LAST WORDS

ATIT SORNSONGKRAM
CONDRO PRIYOAJI
DAVY LINGGAR
GARY-ROSS PASTRANA
JED GREGORIO
KEI IMAZU
LESLEY-ANNE CAO
MARUTO
PRAE PUPITYASTAPORN
TANATCHAI BANDASAK
TROMARAMA

20 NOVEMBER – 4 FEBRUARY 2022

ROH
JALAN SURABAYA 66
JAKARTA 10310

PHOTOS BY DAVY LINGGAR
COURTESY OF THE ARTISTS AND ROH





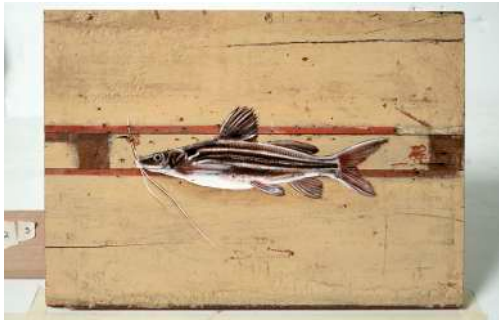
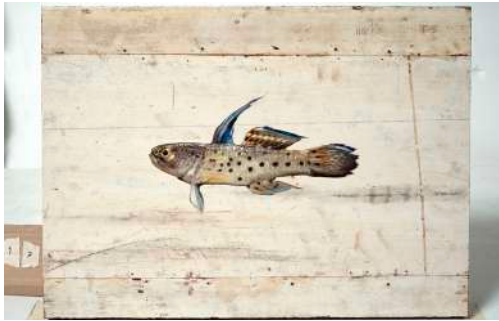
ROH

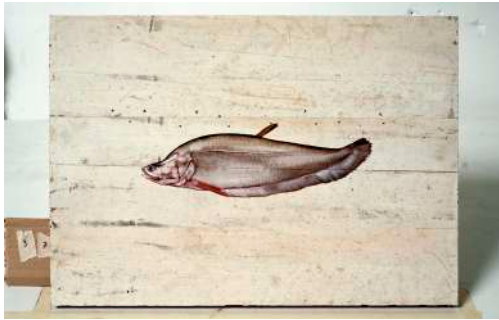
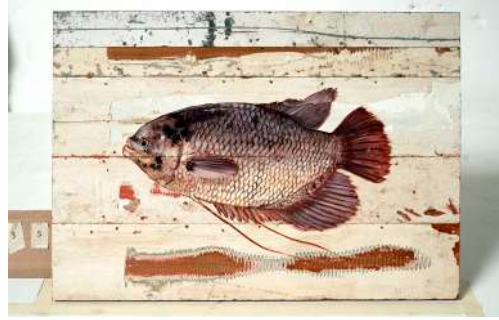
KEI IMAZU

Lost Fish
2021
Reused wooden materials, oil paint
Set of 69 panels
40 × 55 cm each













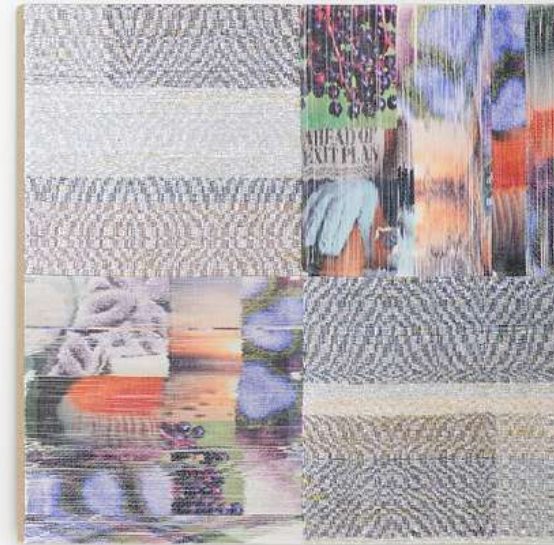
WE ARE HERE

ANDREA BOWERS
CATHERINE WAGNER
CLAUDIE WIESER
DASHIELL MANLEY
DAVINA SEMO
GLENDAlys MEDINA
HAYAL POZANTI
HUGH SCOTT-DOUGLAS
ISAAC JULIEN
JOHN HOUCK
JULIAN HOEBER
KEI IMAZU
LAM TUNG-PANG
LUKE BUTLER
MARGO WOLOWIEC
MARTHA FRIEDMAN
MATT LIPPS
MATTHEW ANGELO HARRISON
NICOLE WERMERS
RASHAAD NEWSOME
ROSE B. SIMPSON
WOODY DE OTHELLO

28 MAY – 2 JULY 2022

JESSICA SILVERMAN
621 GRANT AVE
SAN FRANCISCO, CA, US

PHOTOS BY JOHN WILSON WHITE
COURTESY OF JESSICA SILVERMAN GALLERY

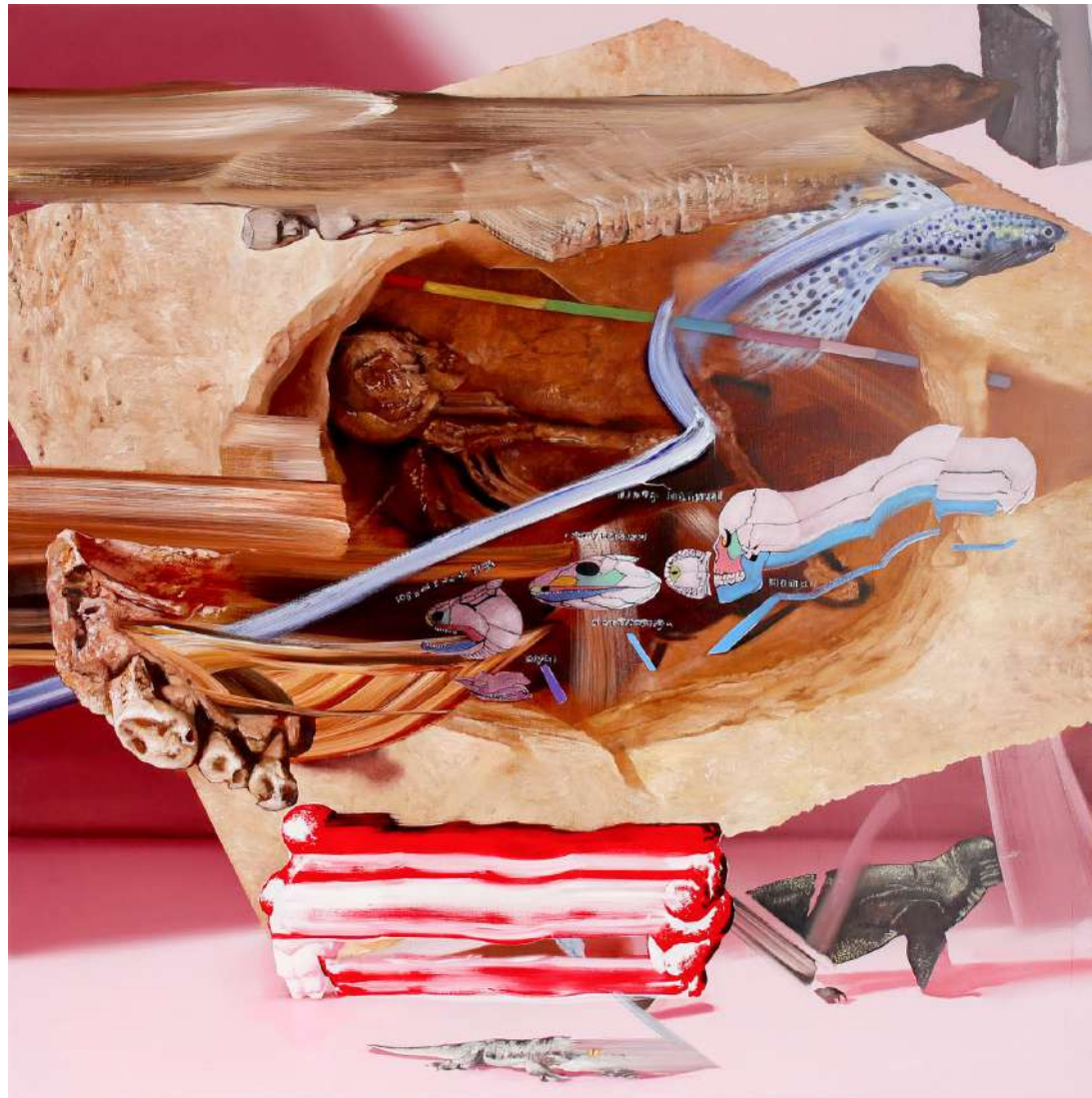




ROH

KEI IMAZU

Circadian Rhythm
2020
Oil on linen
100 × 100 cm



ROH

KEI IMAZU

Pelvis
2020
Oil on linen
100 × 140 cm



ROH

KEI IMAZU

Red Lines
2021
Oil on linen
200 × 135 × 4 cm



TIGER ORCHID
ART BASEL OVR: MIAMI

BAGUS PANDEGA
KEI IMAZU

2 – 6 DECEMBER 2020

ONLINE

PHOTOS COURTESY OF THE ARTISTS AND ROH





ROH

KEI IMAZU

Amorphous Mother
2020
Oil on canvas
130.3 × 194 × 4 cm

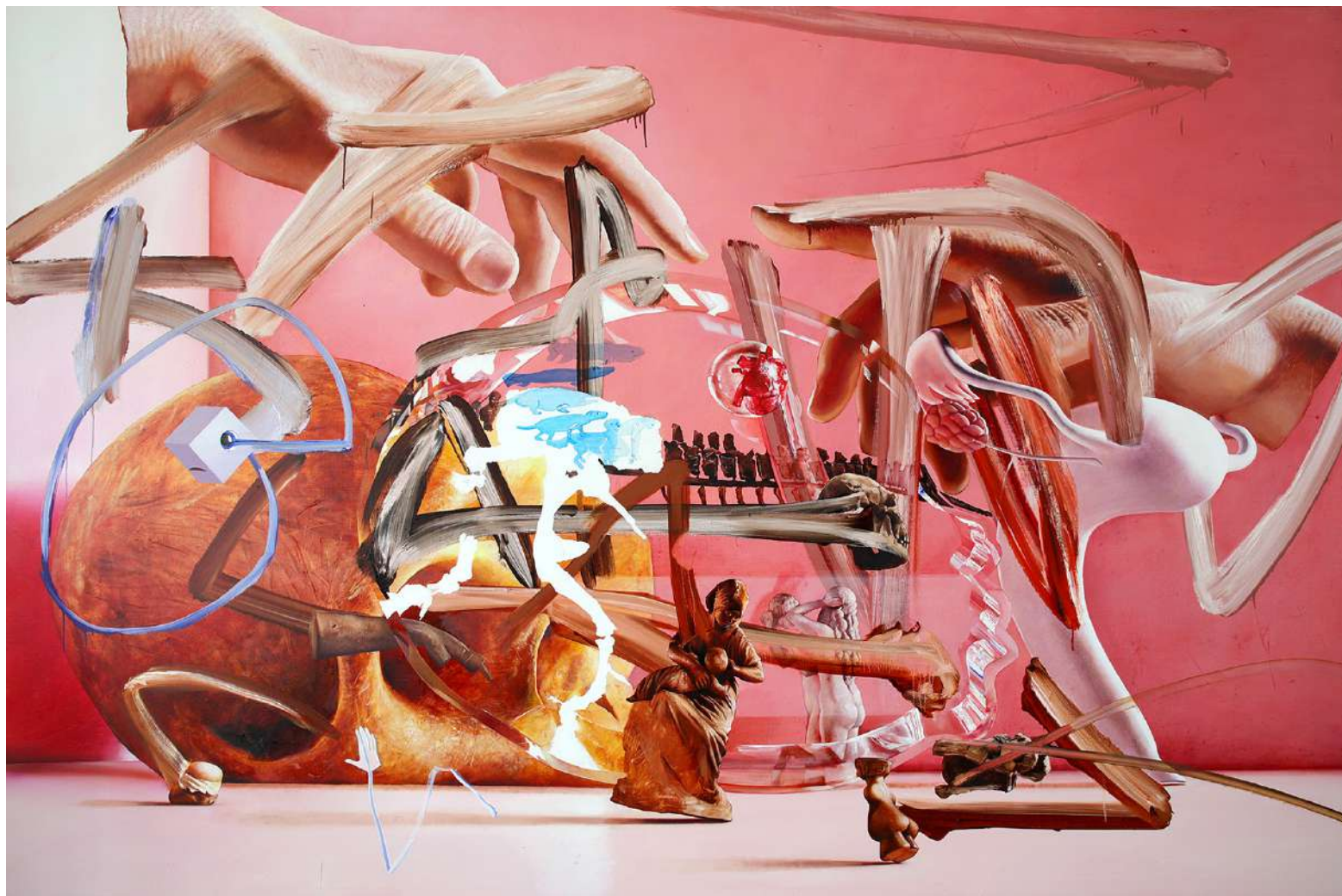




ROH

KEI IMAZU

Pink Ocean
2020
Oil on canvas
200 × 300 × 5 cm





ROH

KEI IMAZU

Statues
2020
Oil on canvas
300 × 200 × 5 cm
(KI 0031)



ART JAKARTA VIRTUAL

ADITYA NOVALI
ARIN DWIHARTANTO SUNARYO
BAGUS PANDEGA
DAVY LINGGAR
FAISAL HABIBI
KEI IMAZU
LUQI LUKMAN
MARUTO
MELLA JAARSMA
NADIRA JULIA
NADYA JIWA
SYAGINI RATNA WULAN
SYAIFUL AULIA GARIBALDI
UJI "HAHAN" HANDOKO
WIMO AMBALA BAYANG

15 OCTOBER 2020 – 15 FEBRUARY 2021

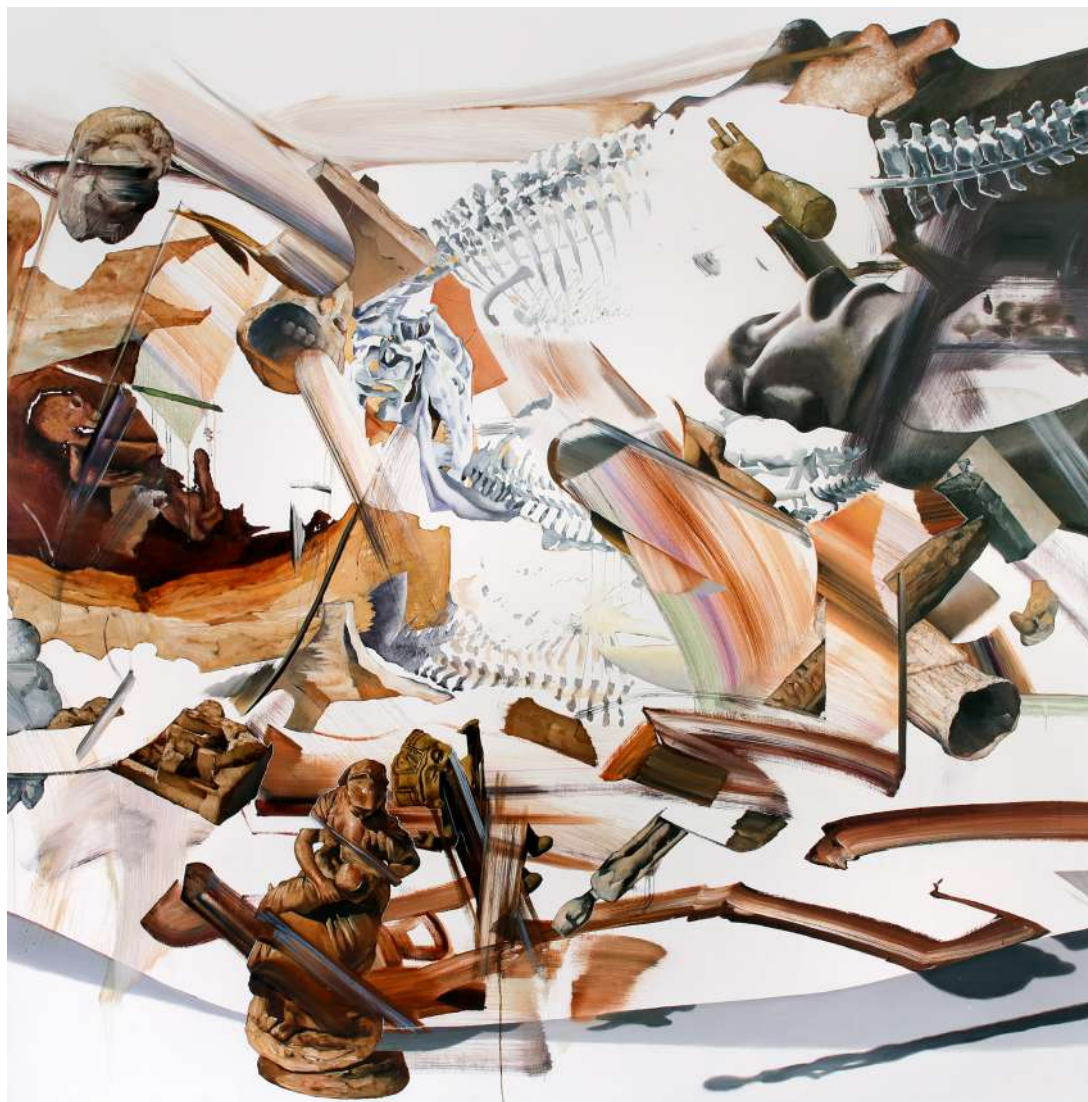
ROH
ONLINE



ROH

KEI IMAZU

Kopiologi
2020
Oil on canvas
194 × 194 × 4 cm



ART BASEL ONLINE VIEWING ROOM

ADITYA NOVALI
ARIN DWIHARTANTO SUNARYO
BAGUS PANDEGA
FAISAL HABIBI
KEI IMAZU
SYAGINI RATNA WULAN
SYAIFUL AULIA GARIBALDI
UJI "HAHAN" HANDOKO

20 – 25 MARCH 2020

ROH
ONLINE

ROH

KEI IMAZU

Arella
2020
Oil on cutting board
24.5 × 14.8 × 6.9 cm



ROH



ROH

KEI IMAZU

Smiling Snake
2020
Oil on cutting board
20 × 10 × 4.3 cm





WEST BUND ART & DESIGN

ADITYA NOVALI
ARIN DWIHARTANTO SUNARYO
BAGUS PANDEGA
KEI IMAZU
SYAGINI RATNA WULAN
SYAIFUL AULIA GARIBALDI

7 – 10 NOVEMBER 2019

WEST BUND ART CENTRE
SHANGHAI, CHINA

PHOTOS COURTESY OF THE ARTISTS AND ROH





ROH Projects

N123

ROH

KEI IMAZU

The Donut of the Heart
2019
Oil on canvas
190 × 140 cm



ROH

KEI IMAZU

Tear down the house and build a boat
2019
Oil on canvas
140 × 190 cm



TAMING Y/OUR PASSION
AICHI TRIENNALE

1 AUGUST – 14 OCTOBER 2019

AICHI ARTS CENTER
NAGOYA CITY ART MUSEUM
NAGOYA CITY (SHIKEMICHI AND ENDOJI)
TOYOTA
AICHI, JAPAN

PHOTOS BY TETSUO ITO
COURTESY OF KEI IMAZU AND ANOMALY



ROH

KEI IMAZU

SURVIVOR

Oil on canvas, vinyl banner, led fan light, Komodo
dragon toy

Painting : 300 × 400 cm

Banner : 1000 × 580 cm



30TH ANNIVERSARY OF THE YOKOHAMA MUSEUM OF ART
MEET THE COLLECTION

TABAIMO
YUSUKE ASAI
KEI IMAZU
KISHIO SUGA

13 APRIL – 23 JUNE 2019

YOKOHAMA MUSEUM OF ART
3 CHOME-4-1 MINATOMIRAI, NISHI WARD, YOKOHAMA
KANAGAWA, JAPAN

PHOTOS BY HARUYUKI SHIRAI
COURTESY OF YOKOHAMA MUSEUM





ANDA DI SINI / YOU ARE HERE

KEI IMAZU

16 MARCH – 12 MAY 2019

MUSEUM HAUS KASUYA
7 CHOME-12-13 HIRASAKU, YOKOSUKA,
KANAGAWA, JAPAN

PHOTOS COURTESY OF THE ARTIST AND MUSEUM HAUS
KASUYA





ROH

KEI IMAZU

Pithecanthropus Erectus
2019
Oil on canvas
194 × 130.3 cm



ROH

KEI IMAZU

Flores erectus and *Leptoptilos robustus*
2019
Oil on canvas
40 × 50 cm



ROPPONGI CROSSING 2019: CONNEXIONS

ANREALAGE
FUMIAKI AONO
YOSUKE BANDAI
ITSUKI DOI + KOHEI OGAWA + TAKASHI IKEGAMI +
HIROSHI ISHIGURO X JUSTINE EMARD
DOKUYAMA BONTARO
KOICHI ENOMOTO
NOBUHIRO HANAOKA
CHIHO HAYASHI
NORIMICHI HIRAKAWA
HYSLOM
TAKEHIRO IIKAWA
KEI IMAZU
HIROFUMI ISOYA
YOI KAWAKUBO
YUKINORI MAEDA
KAI MAETANI
MÉ
MASAHARU SATO
HIROSHI SUGITO
NOBUAKI TAKEKAWA
YUICHIRO TAMURA
NOBUKO TSUCHIYA
MICHIKO TSUDA
HIROKI TSUKUDA
SHOTA YAMAUCHI

9 FEBRUARY – 26 MAY 2019

MORI ART MUSEUM
ROPPONGI HILLS MORI TOWER, 6 CHOME-10-1
ROPPONGI, MINATO CITY,
TOKYO, JAPAN

PHOTOS BY KIOKU KEIZO
COURTESY OF THE ARTIST AND MORI ART MUSEUM



ROH

KEI IMAZU

Long-term Memory
2019
Oil on canvas
500 × 1200 cm





ART JAKARTA

ADITYA NOVALI
ATIT SORNSONGKRAM
AGUS SUWAGE
ARIN DWIHARTANTO SUNARYO
BAGUS PANDEGA
CHOU YU-CHENG
FAISAL HABIBI
JUMALDI ALFI
KEI IMAZU
LUQI LUKMAN
MARUTO
MELLA JAARSMA
NADIRA JULIA
MIT JAI INN
SYAGINI RATNA WULAN
SYAIFUL AULIA GARIBALDI
TROMARAMA
UGO UNTORO
UJI HANDOKO
WEDHAR RIYADI
WIMO AMBALA BAYANG

30 AUGUST – 1 SEPTEMBER 2019

ROH
JAKARTA CONVENTION CENTER
JAKARTA, INDONESIA

PHOTOS COURTESY OF THE ARTISTS AND ROH





ROH

KEI IMAZU

Nautical Chart
2019
Oil on zinc aluminium
226 × 92 × 60 cm



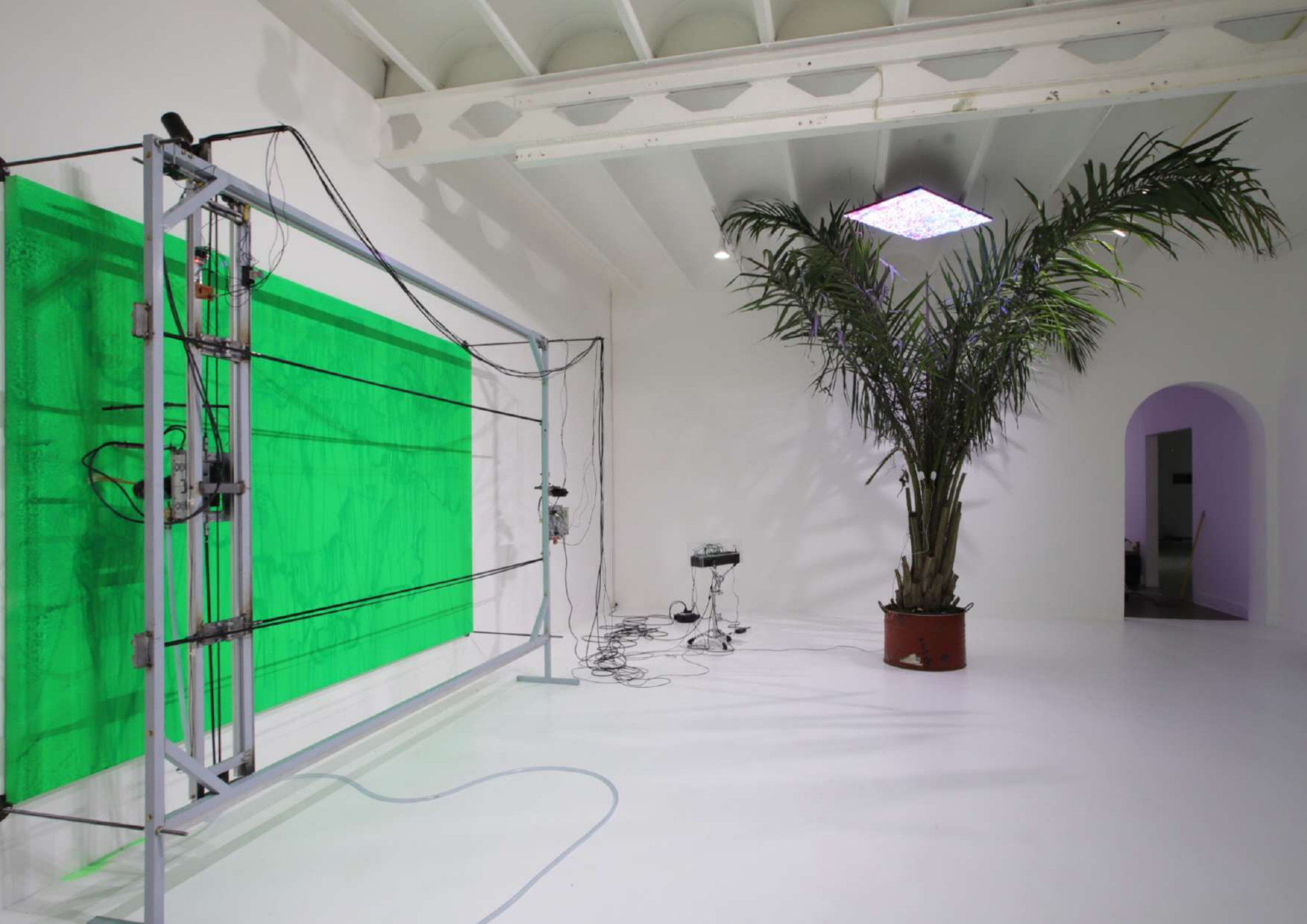
ARTIFICIAL GREEN BY NATURE GREEN
ARTJOG

BAGUS PANDEGA
KEI IMAZU

25 JULY – 25 AUGUST 2019

JOGJA NATIONAL MUSEUM
YOGYAKARTA, INDONESIA

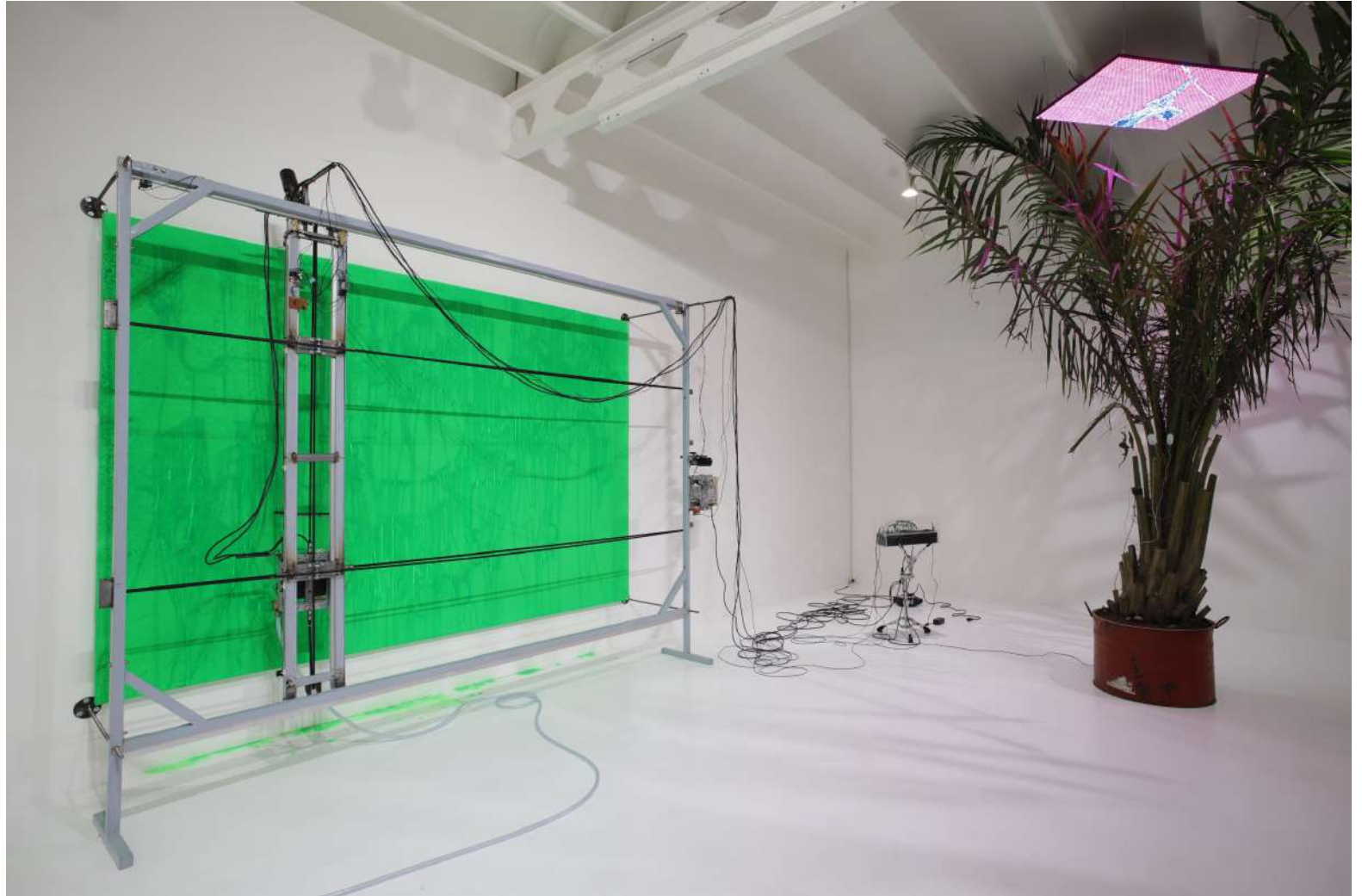
PHOTOS BY KEI IMAZU
COURTESY OF THE ARTISTS AND ARTJOG



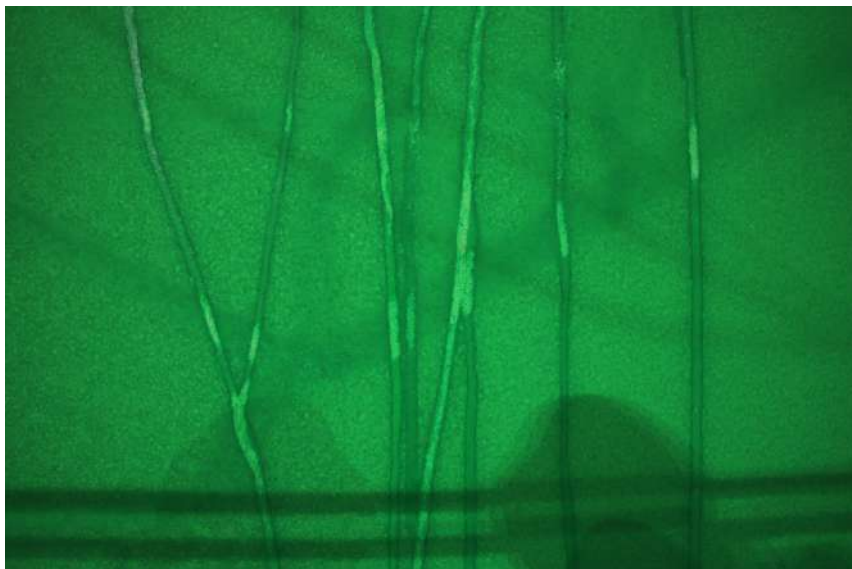
ROH

KEI IMAZU

Artificial Green by Nature Green
2019
Painting machine, canvas, modular synthesizer,
palm tree, hologram LED
Dimension variable



ROH



ART BASEL HONG KONG

ADITYA NOVALI
ARIN DWIHARTANTO SUNARYO
BAGUS PANDEGA
FAISAL HABIBI
KEI IMAZU
SYAGINI RATNA WULAN
SYAIFUL AULIA GARIBALDI
UJI "HAHAN" HANDOKO

24 – 31 MARCH 2019

ROH
HONG KONG CONVENTION AND EXHIBITION CENTRE
HONG KONG

ROH

KEI IMAZU

Starts
2019
Oil on canvas
40 × 50 cm



AAAAAH! PARIS INTERNATIONALE

BAGUS PANDEGA
KEI IMAZU

17 – 21 OCTOBER 2018

ROH
16 RUE ALFRED DE VIGNY
PARIS, FRANCE

PHOTOS COURTESY OF THE ARTISTS AND ROH



ROH PR
JAN



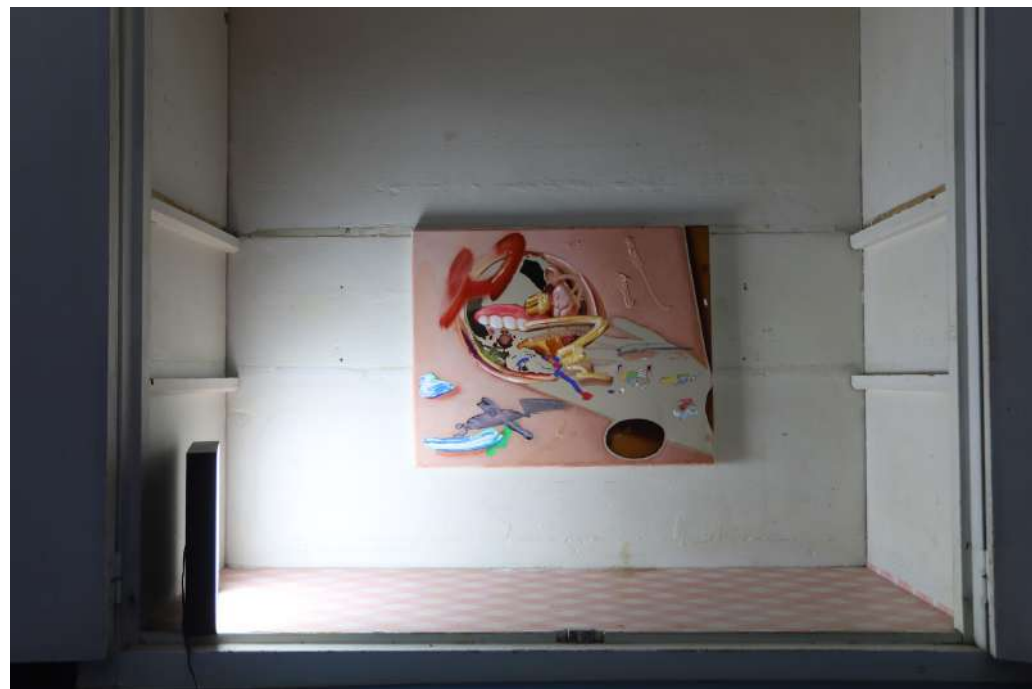
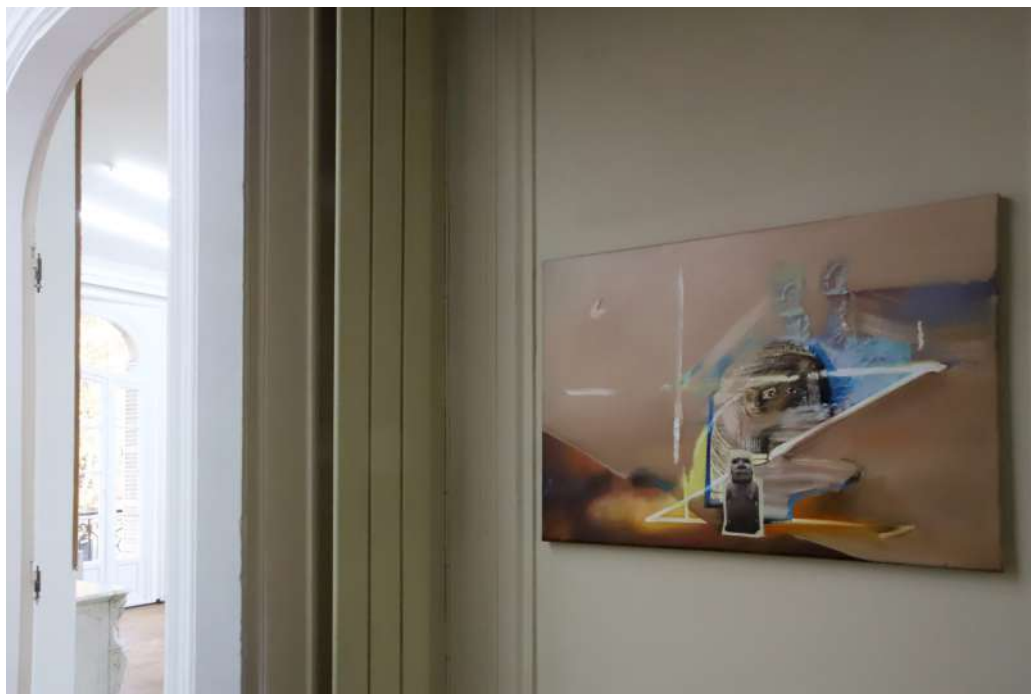
ROH

KEI IMAZU

Blue fish in my hand
2018
Oil on canvas
206 × 434 cm



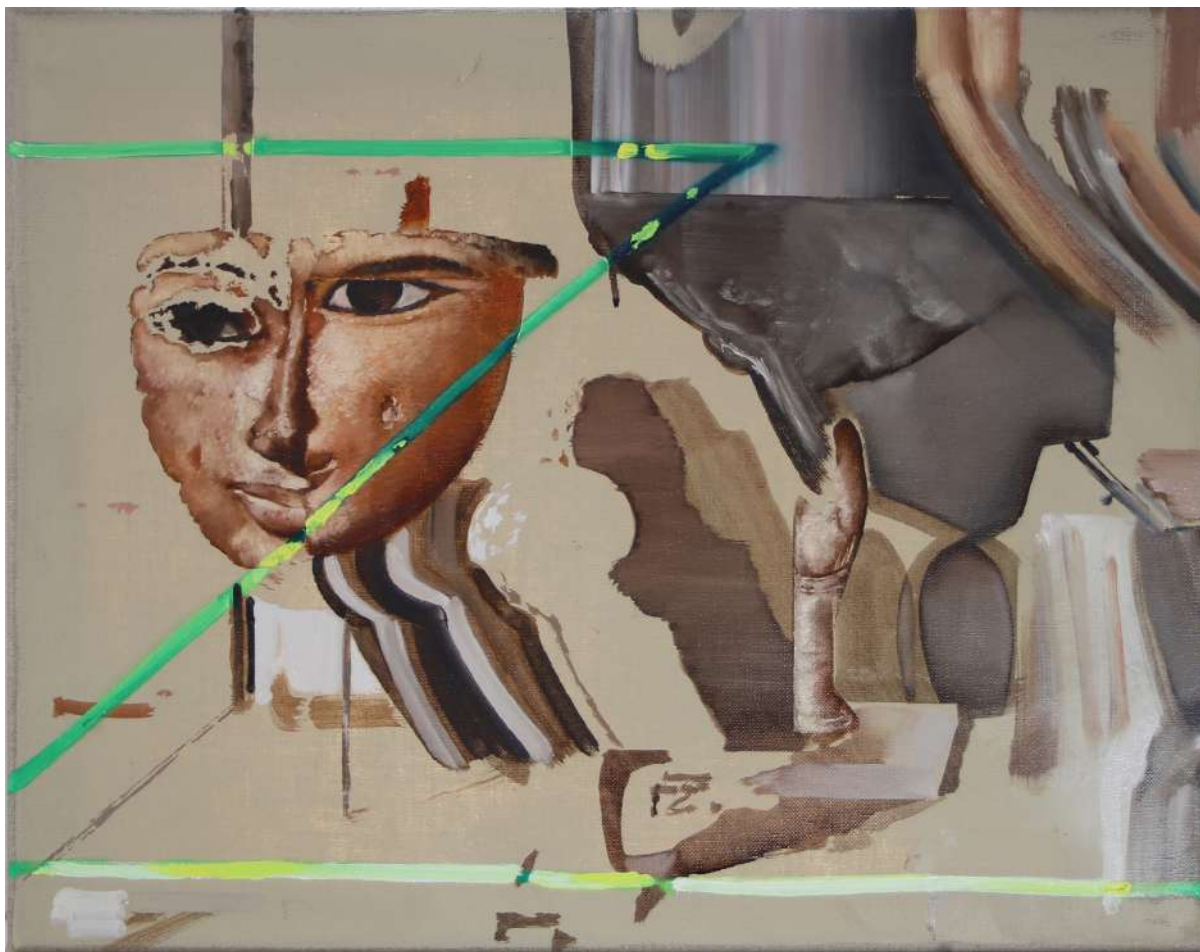
ROH



ROH

KEI IMAZU

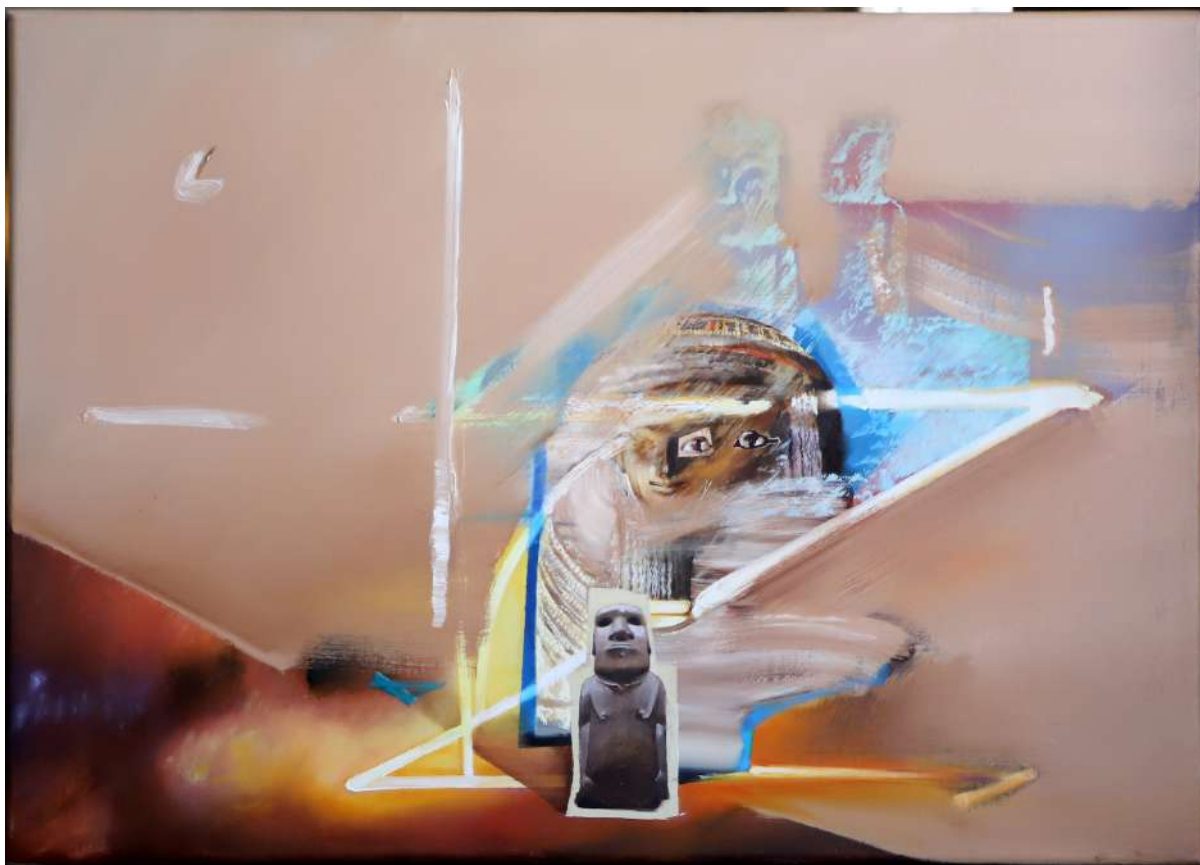
Green line
2018
Oil on Canvas
40 × 50 cm



ROH

KEI IMAZU

I met a lonely moai
2018
Oil on Canvas
50 × 70 cm



ROH

KEI IMAZU

Teeth gummy
2018
Oil on canvas
40 × 50 cm



ROH

KEI IMAZU

Venus in my hand
2018
Oil on canvas
70 × 50 cm



MEASURING INVISIBLE DISTANCE

KEI IMAZU

9 JUNE – 14 JULY 2018

YAMAMOTO GENDAI
3F TERRADA ART COMPLEX, 1-33-10, SHINAGAWA-KU,
TOKYO, JAPAN

PHOTOS COURTESY OF THE ARTIST AND YAMAMOTO
GENDAI





ROH



OVERGROWN

KEI IMAZU

3 – 24 AUGUST 2017

ROH PROJECTS
EQUITY TOWER 40E
JAKARTA, INDONESIA

PHOTOS COURTESY OF THE ARTIST AND ROH PROJECTS

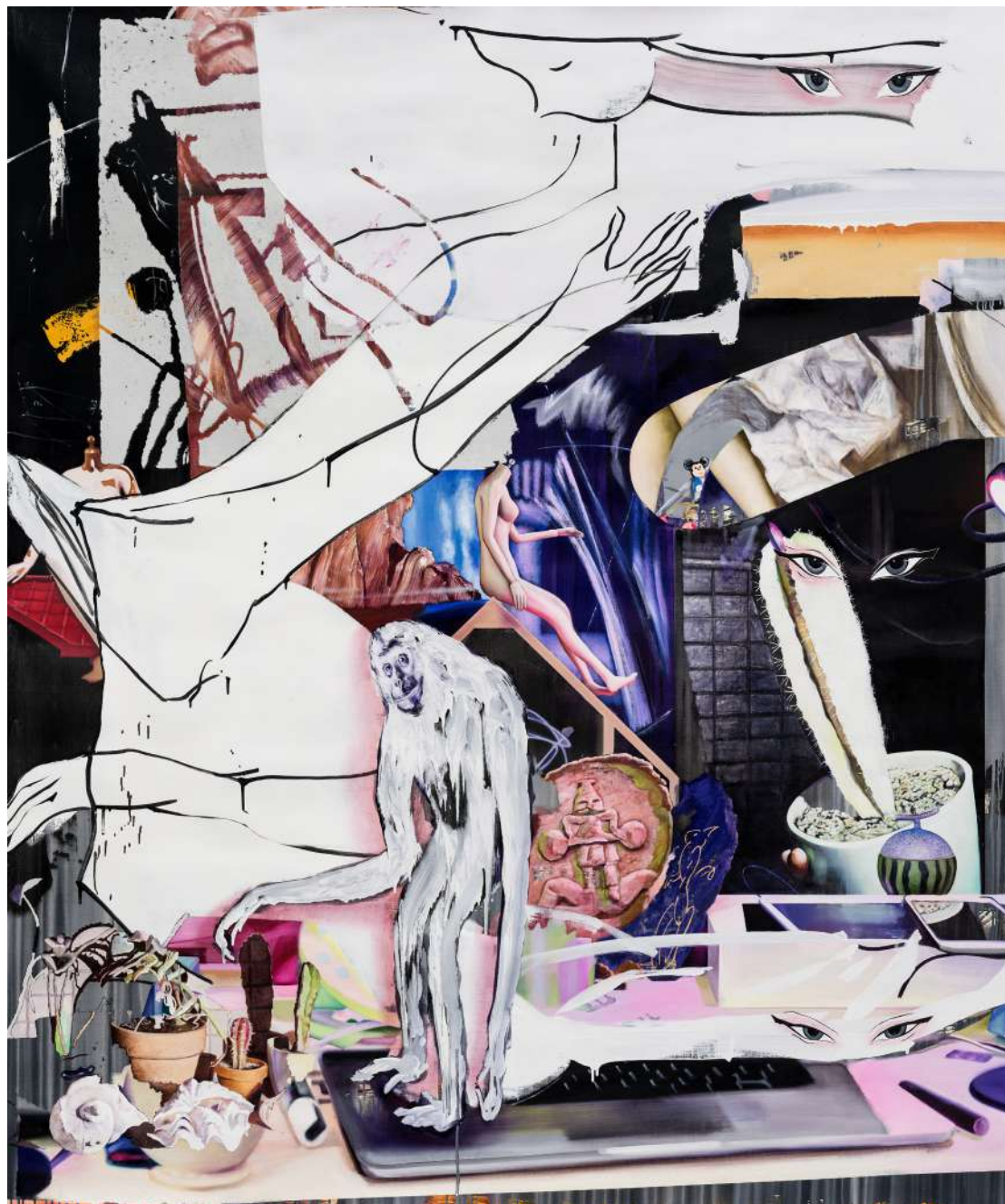




ROH

KEI IMAZU

Sleep Well
2017
Oil on linen
220 × 190 cm (framed)



ROH

KEI IMAZU

Orange Box
2016
Oil, mixed media on wood
22 × 23 × 5 cm



ROH



ROH

KEI IMAZU

Wooo
2017
Oil, acrylic on canvas
210 × 406 cm



ROH

KEI IMAZU

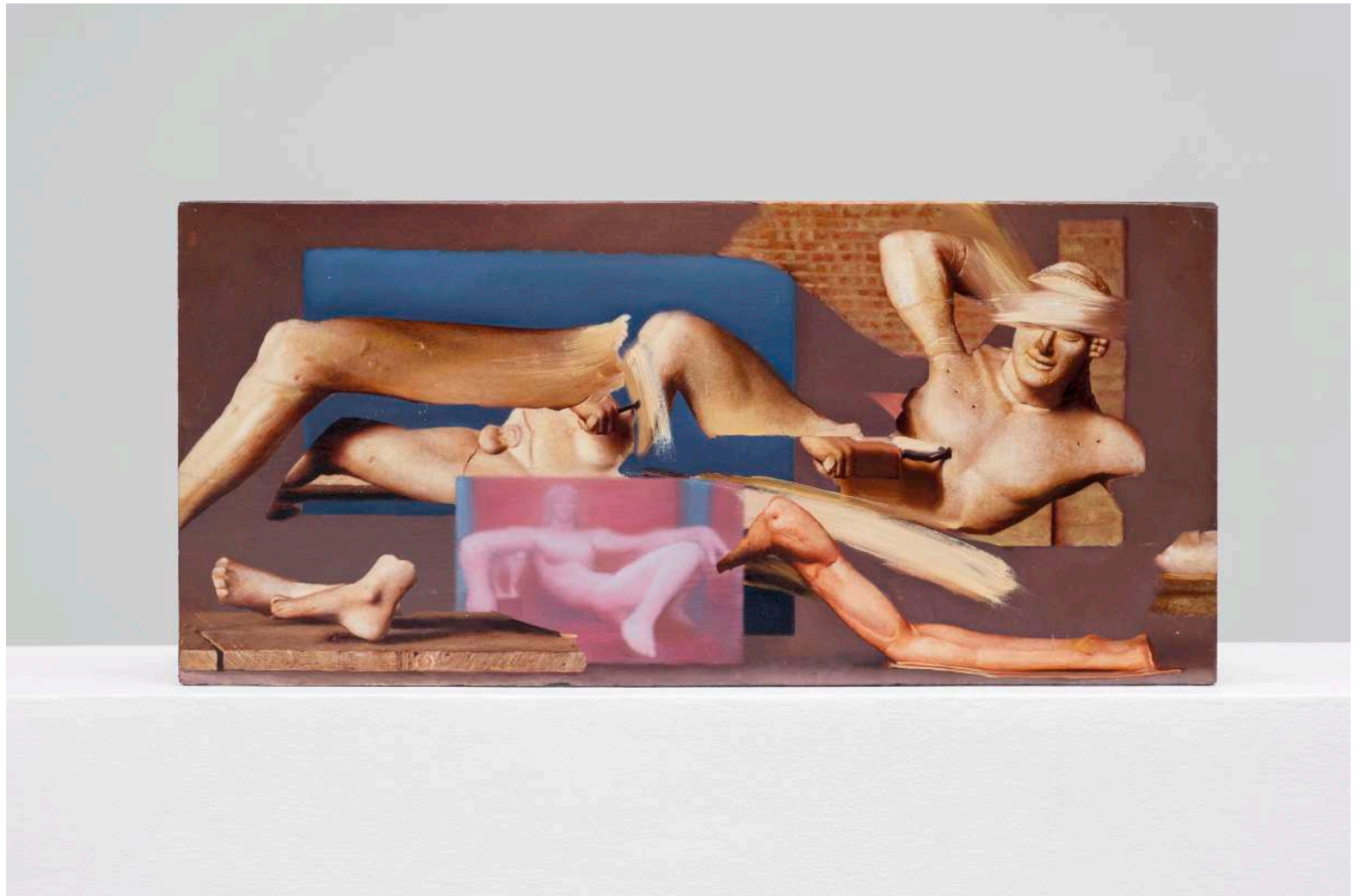
Monkey Grows Something Under The Tomb
2016
Oil on canvas
146 × 205 cm



ROH

KEI IMAZU

Lying Warrior
2016
Oil, mixed media on wood
19.5 × 41.5 × 1 cm



ROH

KEI IMAZU

Human Study
2017
Oil, acrylic on canvas
210 × 406 cm







ROH

KEI IMAZU

Yellow Room
2017
Oil on canvas
140 × 230 cm



ROH

KEI IMAZU

Profile of Woman
2016
Oil, mixed media on wood
18.5 × 23 × 5.5 cm



ROH



ROH

KEI IMAZU

Candy in Amber Room
2017
Oil, mixed media on wood
12.5 × 17 × 2.5 cm



ROH



ROH

KEI IMAZU

Utan
2017
Oil on canvas
160 × 150 cm



ROH

KEI IMAZU

Donuts
2016
Oil, mixed media on wood
18 × 22 × 4 cm



ROH



ROH

KEI IMAZU

Hungry Cat
2017
Oil on cotton canvas
100 × 30 cm



REPATRIATION

KEI IMAZU

16 – 30 JANUARY 2016

YAMAMOTO GENDAI
3F TERRADA ART COMPLEX, 1-33-10, SHINAGAWA-KU,
TOKYO, JAPAN

PHOTOS BY KEIZO KIOKU
COURTESY OF THE ARTIST AND YAMAMOTO GENDAI





ROH

KEI IMAZU

Battle Against the Giants
2016
Oil on canvas
259 × 194 cm



ROH

KEI IMAZU

Repatriation (white background)
2015
Oil on canvas
97 × 194 cm







ALL IN

ADITYA NOVALI
AGUS SUWAGE
ARIN DWIHARTANTO SUNARYO
BAGUS PANDEGA
CINANTI ASTRIA JOHANSJAH
ERWIN WINDU PRANATA
FAISAL HABIBI
GARY-ROSS PASTRANA
GENEVIEVE CHUA
JEREMY SHARMA
KEI IMAZU
PATRICIA UNTARIO
RENDY RAKA PRAMUDYA
RESTU TAUFIK AKBAR
RYAN VILLAMAEL
SONI IRAWAN
SYAGINI RATNA WULAN
SYAIFUL AULIA GARIBALDI
TOSHIYUKI KONISHI
TROMARAMA
UJI "HAHAN" HANDOKO
WEDHAR RIYADI
WIYOGA MUHARDANTO
YUKINORI YANAGI

5 – 8 AUGUST 2016

ROH PROJECTS
ART STAGE JAKARTA
SHERATON GRAND, GANDARIA CITY
JAKARTA, INDONESIA

25 – 28 AUGUST 2016

ROH PROJECTS
BAZAAR ART JAKARTA, PACIFIC PLACE
JAKARTA, INDONESIA

ROH

KEI IMAZU

Body Language
2016
Oil on canvas
194 × 130.3 cm



ROH

KEI IMAZU

Still Life #2
2016
Oil on canvas
130.3 × 194 cm



BROKEN IMAGE

KEI IMAZU

28 FEBRUARY – 28 MARCH 2015

YAMAMOTO GENDAI
3F TERRADA ART COMPLEX, 1-33-10, SHINAGAWA-KU,
TOKYO, JAPAN

PHOTOS BY KEIZO KIOKU
COURTESY OF THE ARTIST AND YAMAMOTO GENDAI

Broken Image

Kei IMAZU





ROH

KEI IMAZU

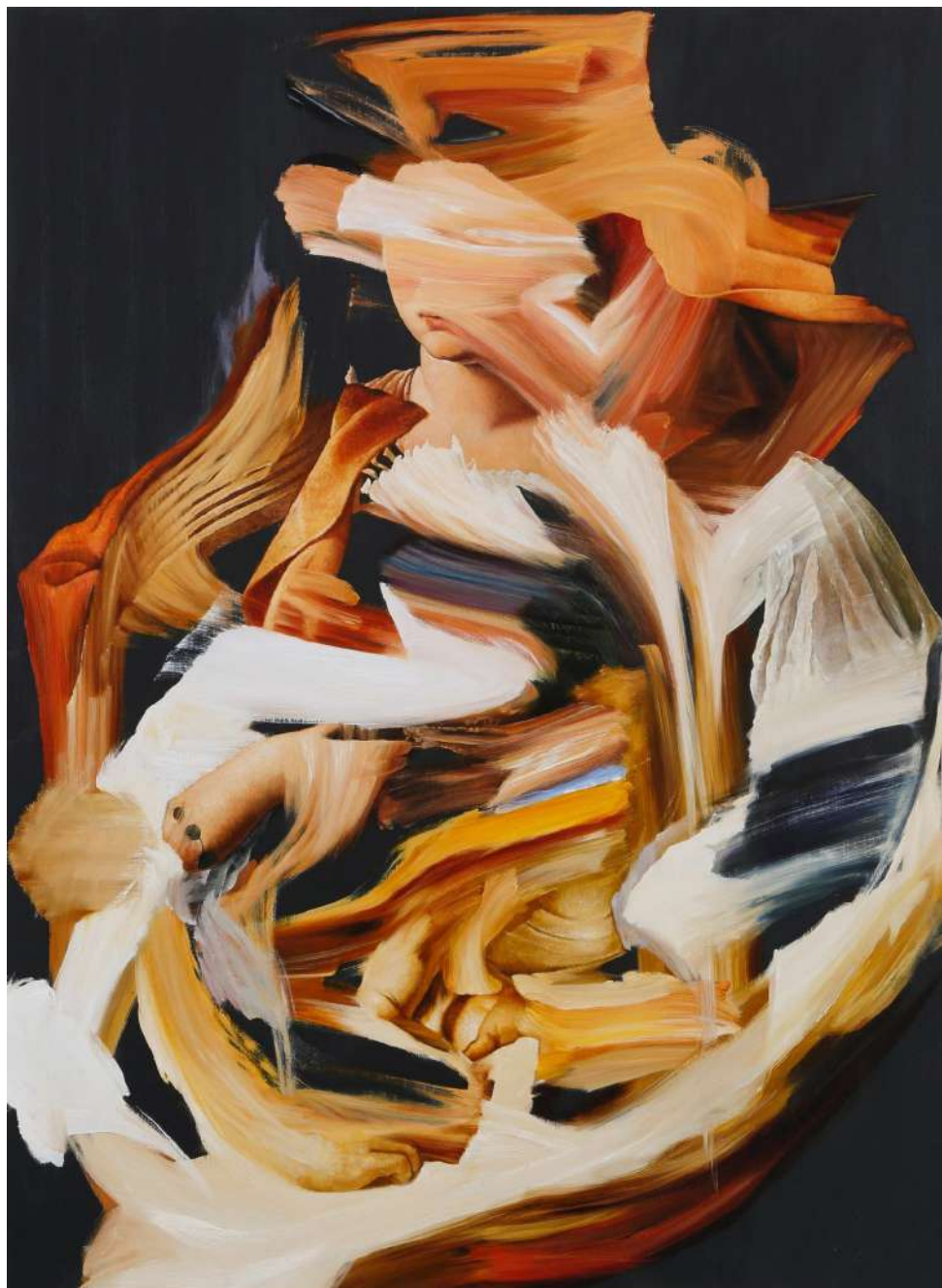
Chorus
2015
Oil on canvas
194 × 130.3 cm



ROH

KEI IMAZU

Portrait of the Woman
2015
Oil on canvas
130 × 97 cm



ROH

KEI IMAZU

Nude Colors
2014
Oil on canvas
162 × 227.3 cm



